

WPE/UKOPRA Poole Bay Classic Powerboat Event 2026

This notice is issued by Poole Harbour Commissioners on behalf of UKOPRA.

Mariners are advised that the UKOPRA Poole Bay 100 Powerboat Event will take place on Saturday 13th June 2026. Approximately 30-35 Offshore Powerboats ranging from 19ft to 50ft, will complete a multi-lap course within Poole Bay extending to Western Solent Approaches, starting from the Bournemouth Pier area, traveling in a clockwise direction. This notice is self-cancelling on completion of racing.

Operations / Race Management: Race Control will be on Poole Quay. On water operations will be coordinated by 'Safety Control' afloat on the course, contactable on VHF Channel M1 / 37a. Other Marshal boats will patrol the area.

Start Procedure: Competing vessels will depart Poole Quay Marina at 11:30, in safe-speed convoy lead out of Poole Harbour by Start Boat 'Red Wings' to the Muster Area, ½ mile West of 'Alum Outfall Buoy'. The Start Boat will collect the fleet from Muster, running East on a heading for Mark 1 – 'Fisherman's Walk' as per below. The fleet will go off in two starts; Start 1 – Classes 1, 1L & 2 at 12:30, Start 2 – Class 3 at 12:40.

Finish: The finish will be at the lap line, a gate formed with Bournemouth Outfall Buoy to the North and the event Start / Finish Boat to the South. All racing is due for completion by 14:30.

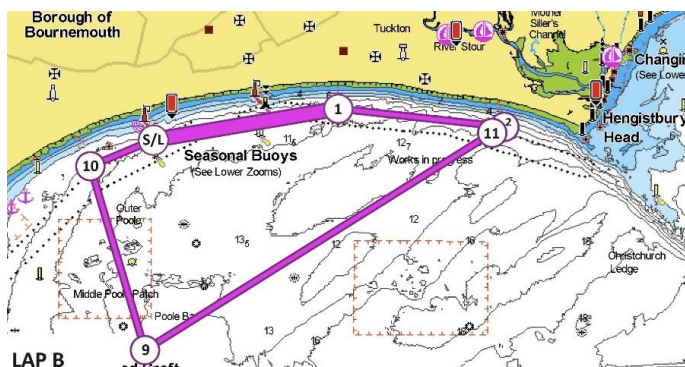
Spectators and other craft in the area: In the interests of safety, all craft not participating are advised to keep well clear of the Start / Finish Areas. Vessels should proceed with caution and be aware of their surroundings and other nearby vessels whilst navigating in or near to the areas of racing activity. They should take heed of the advice from Race Marshall/Support vessels who will all be displaying a 'UKOPRA' marshal flag. All local spectator vessels are strongly advised to keep North of an invisible line between 'Bournemouth Outfall' buoy and the yellow buoy South of Boscombe Pier at 50°42.895'N 1°50.399'W. That said, the International Regulations for the Prevention of Collisions at Sea (1972), as amended, take precedence over all other considerations. For further information on the event please visit www.ukopra.org or contact Danielle Strawford on 07721 694 135 / danni@ukopra.org.

Marks of the Course

Start/Lap Line	Bournemouth Outfall Buoy	P	Mark 6	Bridge	P
Mark 1	Fisherman's Walk	S	Mark 7	Needles Fairway	S
Mark 2	Southbourne 2	S	Mark 8	3 Buoys	S
Mark 3	Hengistbury Head	P	Mark 9	BP Wytch Farm/ Magnum/ Boss	S
Mark 4	North Head	S	Mark 10	Alum Outfall Buoy	S
Mark 5	North East Shingles	S	Mark 11	Southbourne Outfall	S
			Mark 12	Christchurch Ledge Buoy	S

Courses: Race boats arrive at 'Muster' (West of Alum Outfall Buoy) from 12:15. Race away is at 12:30 & 12:40. There is also provision of a Rough Weather Course should conditions require, timings remain the same. **Course decision to be made by OOD ahead of Drivers Briefing, Saturday 13th June 09:00.** Outcome of decision to be posted on UKOPRA social media pages.

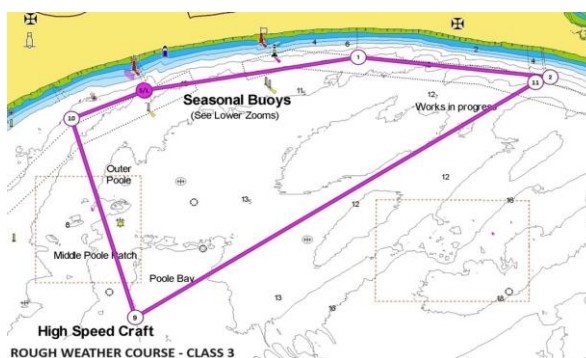
**FULL COURSE
CLASS 3**
START RUN + 5 x LAP B



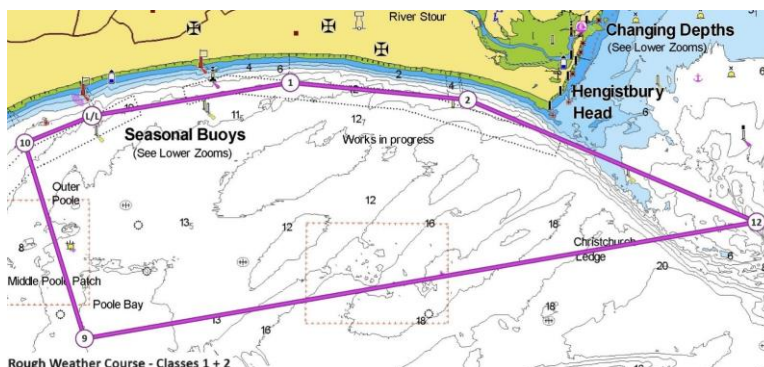
**FULL COURSE
CLASS 1 AND 2**
START RUN + 3 x LAP D



**ROUGH WEATHER
CLASS 3**
START RUN + 4 LAPS



**ROUGH WEATHER
CLASS 1**
START RUN + 5 LAPS



**ROUGH WEATHER
CLASS 2**
START RUN + 4 LAPS

Mariners are reminded that Radar, AIS, CCTV, Telephone and VHF Channels are recorded 24/7

Owners, Agents, Charterers, Marinas, Yacht Clubs and Recreational Water Sport Organisations should ensure that the contents of this Notice are made known to the masters or persons in charge of their vessels or craft.

**Harry Gregory
HARBOUR MASTER**

All Local Notices are available on the PHC website: www.phc.co.uk/safety/local-notices-to-mariners