

Pilotage Directions, Pilot Boarding Point and Anchorage

Mariners are advised that the new edition of the **Poole Pilotage Directions** will come into force at 00.01hrs on 1st March 2026 and will be available in place of the current 2022 edition at www.phc.co.uk/pilotage. All known current users have been consulted on their contents which regulate the provision of Pilots for vessels subject to compulsory pilotage within Poole Harbour Limits as well as Pilot Exemption Certificates (PEC).

At the same time, the charted Pilot Boarding Point will be relocated 0.7NM further to seaward and a recommended anchorage position for ships has also been charted.

Pilot Boarding Point:

50°38.580'N 001°54.033'W

(1NM from Bar Buoy on a heading of 135°T, due east of Old Harry's Rock)

Shipping Anchorage:

50°39.281'N 001°53.574'W

(1NM from Bar Buoy on a heading of 090°T)

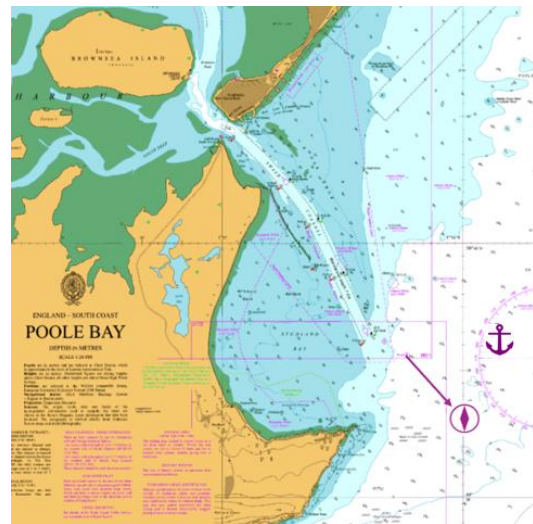


Chart corrections will follow shortly from the UKHO and the agreed Pilotage Plan has also been updated, available on the above link.

Mariners are reminded that Radar, AIS, CCTV, telephone and VHF channels are recorded 24-7.

Owners, Agents, Charterers, Marinas, Yacht Clubs and Recreational Water Sport Organisations should ensure that the contents of this Notice are made known to the masters or persons in charge of their vessels or craft.

HARRY GREGORY
HARBOUR MASTER

All active Local Notices are available here: www.phc.co.uk/safety/local-notice-to-mariners