

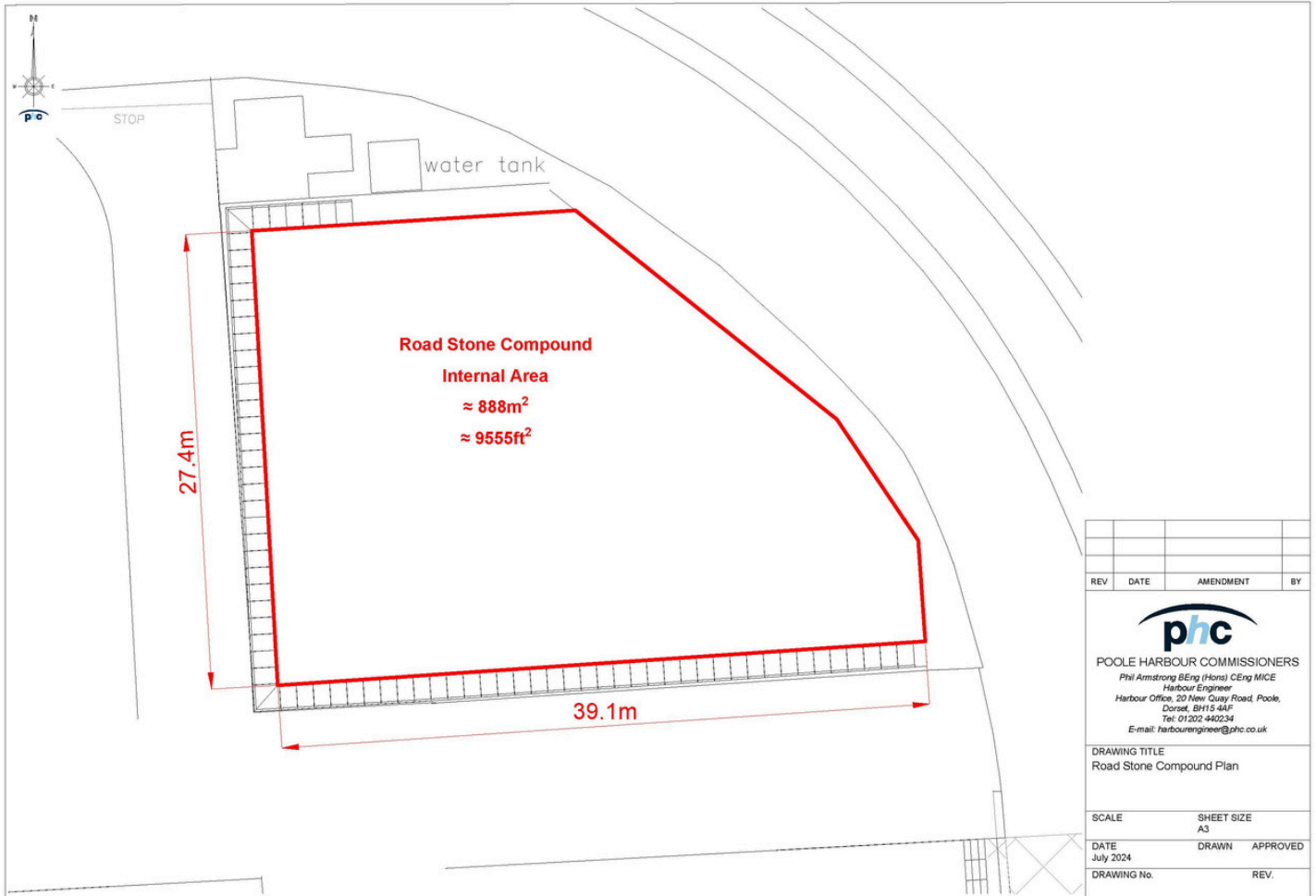


**OPEN WALLED COMPOUND
NEW HARBOUR ROAD
POOLE BH15 4AJ**

- Available now for Import / Export cargo
- Internal Area: 888 m² (9,555 ft²)
- Close to operational berths

For full heads of terms and to arrange a viewing, please contact Rosie Macnamara at rmacnamara@phc.co.uk





REV	DATE	AMENDMENT	BY


POOL HARBOUR COMMISSIONERS
Phil Armstrong BEng (Hons) CEng MICE
Harbour Engineer
 Harbour Office, 20 New Quay Road, Poole,
 Dorset, BH15 4AF
 Tel: 01202 440234
 E-mail: harbourengineer@phc.co.uk

DRAWING TITLE
Road Stone Compound Plan

SCALE	SHEET SIZE
	A3

DATE	DRAWN	APPROVED
July 2024		

DRAWING No.	REV.