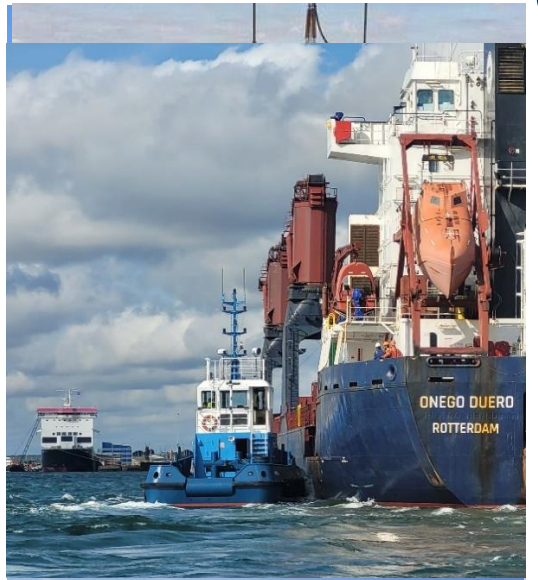




portofpoole
**COMMERCIAL
CHARGES
2025**



SHIP DUES.....	03
PASSENGER & GOODS DUES.....	04
STORAGE OF GOODS & FREIGHT VEHICLES	05
FREIGHT VEHICLE RESTOW	06
CARGO HANDLING, WAREHOUSE & HAULAGE	07
BORDER CONTROL EXAMINATION	08
PILOTAGE	09
PILOTAGE EXEMPTION.....	10
TOWAGE	11
MOORING & LAYBY	12
SECURITY, FRESH WATER & WASTE	13

SCHEDULE OF CHARGES PURSUANT TO SECTION 26 OF THE HARBOURS ACT 1964, SECTION 10 OF THE PILOTAGE ACT 1987, ARTICLE 29 OF THE POOLE HARBOUR REVISION ORDER 2012 AND OTHER RELEVANT STATUTORY PROVISIONS.

The Ship, Passenger & Goods Dues and other Charges will be brought into force by Poole Harbour Commissioners on the 1st January 2025

All charges exclude VAT where applicable.

ENVIRONMENTAL INFORMATION REGULATIONS

Under the Environmental Information Regulations, Poole Harbour Commissioners charge 11p per A4 sheet for any information provided

SHIP DUES

Payable on entry for every commercial vessel.

GRT/GT	Charge Per GRT/GT
Less than 3,000	£1.23
3,000 to 5,999	£1.38
6,000 to 10,000	£1.52
More than 10,000	£1.65

Additional Ship Dues at the above rate will be levied upon every commercial vessel remaining in the Harbour after the expiration of seven days from the date of entry and for each period of seven days or part thereof until departure.

Vessels which have been assigned dual tonnages will be charged Ship Dues on the higher tonnage.



PASSENGER & PASSENGER VEHICLE

Dues for each passenger embarking or disembarking and each passenger vehicle shipped or unshipped will be charged as follows:

Passenger/Vehicle	Charge
Adult	£11.47
Child	£3.92
Car	£6.61
Caravan	£6.61
Trailer	£6.61
Motorcycle	£3.48
Coach	£174

GOODS DUES

For every tonne of cargo, of any sort or kind whatsoever, imported or exported, shipped or unshipped, laden or unladen:

Berth	Charge Per Tonne
Port of Poole	£1.43
Private	£1.16

The lower rates of Cargo Dues are applicable only to private quay owners importing or exporting, shipping or unshipping, loading or unloading their own cargoes across their own quays.

Cargo handling charges are also applicable at Port of Poole berths.

STORAGE OF GOODS & FREIGHT VEHICLES



REFRIGERATED STORAGE

(Subject to availability)

Refrigerated	Charge per Reefer Unit
Up to 6 hours	£19.51 per hour
Over 6 hours	£162.27 per day

PALLETISED STORAGE

(Ex Freight Vehicle)

Freight Unit Load	Daily Charge
Less than 10%	£12.32
10% to 24.9%	£23.62
25% to 50%	£47.24
More than 50%	£95.51

NON-PALLETISED STORAGE

Cargo	Charge
Awaiting Collection	£POA

FREIGHT VEHICLES

Freight Vehicles (in transit)	Charge
First 48 hours	FREE
Therafter	£20.54 per day

OFFLOAD & RESTOW REQUIRED BY HAULIERS/AGENTS

Transferring and/or reloading of goods from vehicle to warehouse or storage area. Restow of goods on vehicle.

PALLETISED

Offload & Restow of Load	Charge
Less than 10%	£134.54
10% up to 25%	£233.13
More than 25% up to 50%	£347.13
More than 50%	£572.04

NON-PALLETISED

Offload & Restow	Charge
	£POA

Weighbridge	Charge
Non-Contract Per use	£47.24




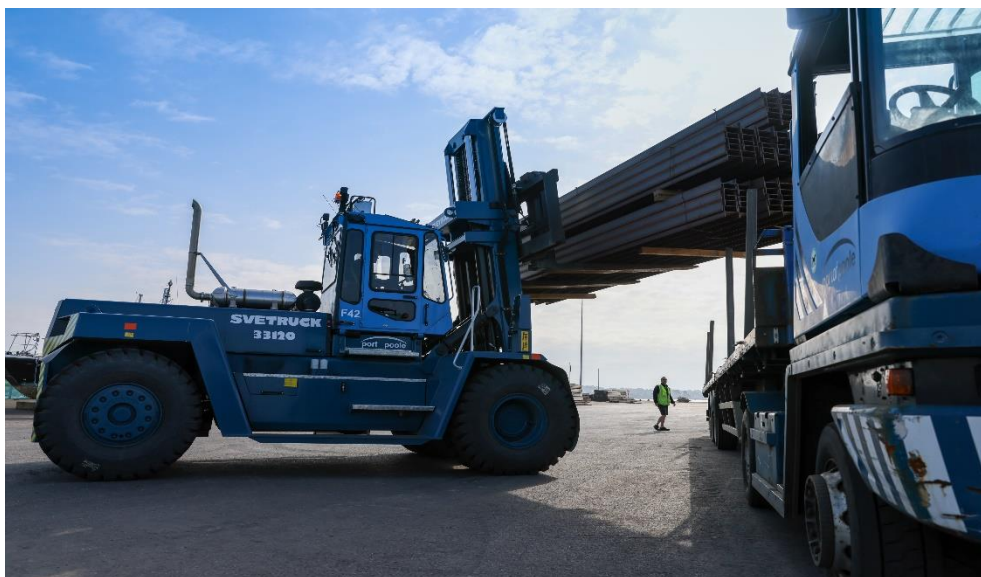
Poole Harbour Commissioners are the sole employers of the Stevedores at the Port. All types of cargo are handled, and a wide range of dock warehouses are available, full details of which are contained on the PHC website (link below). Poole Harbour Commissioners also operate their own Transport Department, affording road haulage throughout the U.K.

For competitive cargo handling rates please contact the Port Manager.

 01202 440220

 stevemoors@phc.co.uk  www.phc.co.uk

 Poole Harbour Commissioners, 20 New Quay Road, Hamworthy, Poole, BH15 4AF



HAZARDOUS GOODS

Freight units carrying Class 1 Explosives (except 1.4S) or Class 7, both import and export, are subject to an additional charge.

Hazardous Class 1 or 7	Charge
Per Freight Unit	£370.75

THE FOLLOWING CHARGES FOR EXAMINATIONS ARE APPLICABLE AT THE PORT OF POOLE via CNS

These charges are applicable where UK Border Force, Port Health, Animal & Plant Health Agency, DEFRA, Forestry Commission, Food Standards Agency, Trading Standards, VOSA or any other authority undertakes an examination where stevedoring services are required.

Stevedoring for Border Control Examinations	Charge
Selected for Examination - Accompanied	£0
Presented for Examination – Unaccompanied	£0
Full load turnout	£0
Partial load turnout	£0

To ensure the operational running and ongoing maintenance of the Border Control Post, a Common User Charge (CUC) will be payable for each imported loaded freight unit whether the facilities are used or not. This charge will be raised to the nominated agent (as indicated on CNS) at the time of out-gate. This charge will be kept under review and can be amended at short notice.

Border Control Post	Charge
Common User Charge Per commodity on CHED (Health Cert)*	£0

- This is capped

ANY CHARGE BY EXAMINATION AUTHORITIES ARE NOT INCLUDED IN THIS TARIFF.

The Port of Poole's decision not to charge for use of its BCP will be reviewed each year with any future change only applying from 1st April 2025.

COMPULSORY PILOTAGE

Pilotage is compulsory within the limits of Poole Harbour for the following vessels:

- Over 50 metres overall in length
- Over 30 metres overall in length or 10metres overall beam, if carrying more than 12 passengers
- Commercial vessels with an overall length of between 30 metres and 50metres, carrying, or likely to carry, dangerous goods or hazardous substances

PILOTAGE LEVY

Payable on entry into Poole Harbour by every vessel subject to compulsory pilotage.. For any vessel movement between berths, 50% of the levy will apply.

PILOTAGE CHARGES

Length of Vessel	Charge per Act	PEC Act
30m to 49.9m	£576.15	35% of pilot charge
50m to 79.9m	£820.57	35% of pilot charge
80m to 99.9m	£1069.11	35% of pilot charge
100m to 129.9m	£1478.88	35% of pilot charge
More than 130m	£1679.15	35% of pilot charge

Additional		Charge
Pilotage Levy	per GRT/GT	£0.14
Cancellation	less than 1 hour notice	£315.29
Cancellation	1 hour or more notice	£0
Provision of 2 nd Pilot		£315.29
Pilot carried over	per 24 hours or part	£566.90

PROVISION OF TWO PILOTS

A charge will apply where vessels request, or the Harbour Master requires an additional pilot.

PILOT CARRIED OVER

All travel costs associated with the return of the pilot to Poole will also be charged against the ship.

PILOTAGE EXEMPTION

A bona fide master or deck officer may obtain a Pilotage Exemption Certificate subject to having the required skill, experience and local knowledge as determined by the Competent Harbour Authority.

Pilotage Exemption Examination	Charge
Examination for Pilotage Exemption Certificate	£641.88
Re-examination for Pilotage Exemption Certificate	£431.34
Issue of a Pilotage Exemption Certificate	£103.73
Renewal of a Pilotage Exemption Certificate	£112.97
Amendment to Pilotage Exemption Certificate	£76
Duplicate Pilotage Exemption Certificate	£76



Pilotage requirements should be passed to Poole Harbour Control on VHF Channel 14 or telephone 01202 440230

TOWAGE CHARGES ATTENDING

Cost of tug whilst attending ships to or from berths, from the time the tug leaves the mooring until return to berth.

STANDBY

Tug ordered to "standby" at its mooring but not called upon to be used.

Towage Operation	Charge per tug per hour or part thereof
Attending Tug departed berth	£1290.94
Standby Tug alongside berth	£644.96

CANCELLATION

1 hour or more notice before tug due to depart berth: £0

Less than one hour notice: £644.96 (equivalent of one hour of standby rate)

MINIMUM CHARGE

One hour per tug.



MOORING/UNMOORING CHARGE

The charges are applicable to all vessels where Poole Harbour Commissioner's stevedores are conducting the mooring / unmooring operation.

Mooring Operation	Charge
Vessels not exceeding 140 metres LOA	£371.77
Vessels over 140 metres LOA	£498.10

Mooring Operation (22:00 to 06:00)	Charge
Vessels not exceeding 140 metres LOA	£522.74
Vessels over 140 metres LOA	£649.06

LAYBY CHARGES

Layby	Charge per hour
On completion of cargo - 2 hours	FREE
Thereafter	£78

Vessel requesting layover alongside the Quays NOT loading or unloading within the Port or while weather-bound, minimum charge of 24 hours.

PORT SECURITY CHARGE

All Vessels shall pay a Port Security Charge under the ISPS Code. This charge will not apply to Vessels less than 500 GRT.

Port Security Charge	Charge
Port Entry Charge	£158.16

Fresh Water requirements should be passed to Poole Harbour Control on VHF Channel 14 or telephone 01202 440230

Fresh Water Supply	Charge
Connection	£132.48
Per cubic metre	£7.33

Waste Management	Charge
Environmental Charge	£158.16
Additional skips & Cat 1	POA

ENVIRONMENT CHARGE FOR WASTE MANAGEMENT

All commercial vessels shall pay a mandatory 'Environment Charge' under the Port Waste Reception Facilities Regulations 2003, whether they use the waste facilities or not.

The charge includes the costs for the provision of up to 1 cubic metre of general garbage (non-hazardous) and international catering waste facilities only. All other waste stream arrangements must be made through the vessel's shipping agent at their cost.

It is the Port's policy to recover the costs incurred in the provision of waste management for vessels.

This Environment Charge will be regularly reviewed to take account of actual costs of the provision of waste reception facilities and their management including the administrative costs involved. The basis for calculation of the charge is available from the Harbour Office.

Vessels can apply for an exemption from some of the requirements of the Port Waste Reception Regulations. Ships so entitled should apply to the Maritime Coastguard Agency in accordance with the relevant Marine Guidance Note. The MCA will advise PHC if a vessel operating in Poole has received such an exemption.

Further information can be found in the Port Waste Management Plan which is available from the Harbour Office.