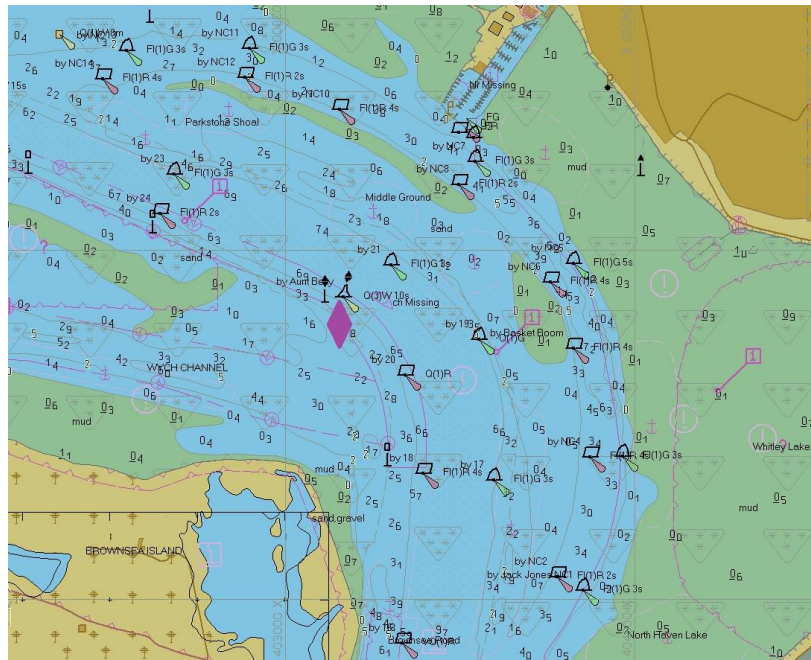


Aunt Betty Buoy AIS Outage

Mariners are advised that the AIS (Automatic Identification System) beacon being trailed on the “Aunt Betty” Buoy is currently out of service.

This beacon is being trailed to further aid navigation in the middle ship channel by large vessels in restricted visibility. When functional, this beacon displays a diamond (approximating an East Cardinal Top Mark) on ship’s ECDIS and small craft chart plotters. This notice will self-cancel when the beacon is reinstated.



Mariners are reminded that Radar, AIS, CCTV, Telephone and VHF Channels are recorded 24/7.

Owners, Agents, Charterers, Marinas, Yacht Clubs and Recreational Water Sport Organisations should ensure that the contents of this Notice are made known to the masters or persons in charge of their vessels or craft.

HARRY GREGORY
HARBOUR MASTER

All Local Notices are available on the PHC website:
www.phc.co.uk/safety/local-notices-to-mariners