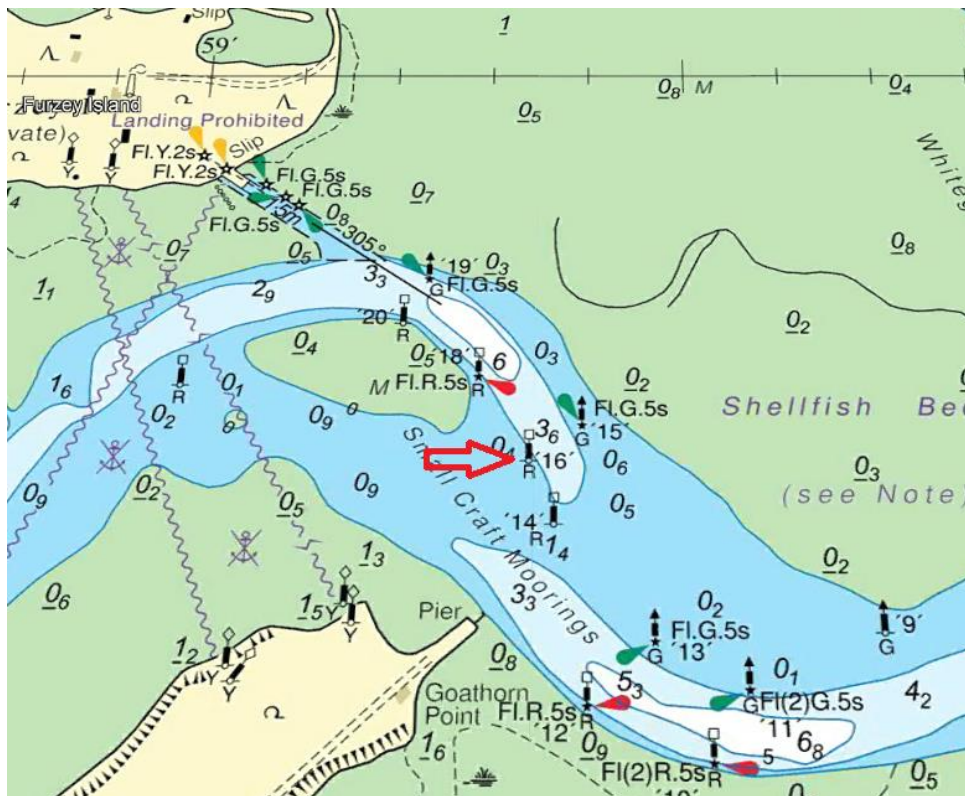


Goathorn Beacon - Light Established

Mariners are advised that a light has been established on the port hand beacon north of Goathorn point.

Position: 50° 40.716'N 001° 58.658'W

Characteristic: FL.R.5s



Mariners are reminded that Radar, AIS, CCTV, Telephone and VHF Channels are recorded 24/7

Owners, Agents, Charterers, Marinas, Yacht Clubs and Recreational Water sport Organisations should ensure that the contents of this Notice are made known to the masters or persons in charge of their vessels or craft.

HARRY GREGORY
HARBOUR MASTER

All Local Notices are available on the PHC website:

<http://www.phc.co.uk/safety/local-notice-to-mariners>