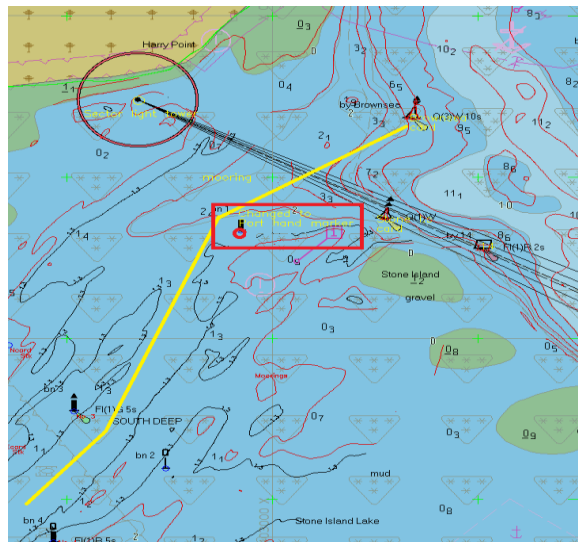


### South Deep Channel

A recent survey of the South Deep Channel has shown the entrance to have shifted position. Therefore, South Deep No.1 (previously a starboard hand green beacon) has been changed to a port hand red beacon and is now unnumbered. The light characteristic has been changed to Fl.R5s. Mariners are advised to follow the beacons new colour and light characteristics and disregard Admiralty chart characteristics until a new starboard hand beacon is established and chart corrections issued.



**Mariners are reminded that Radar, AIS, CCTV, Telephone and VHF Channels are recorded 24/7**

Owners, Agents, Charterers, Marinas, Yacht Clubs and Recreational Water Sport Organisations should ensure that the contents of this Notice are made known to the masters or persons in charge of their vessels or craft.

**CAPTAIN BRIAN MURPHY**  
**HARBOUR MASTER**

All Local Notices are available on the PHC website:  
[www.phc.co.uk/leisure/harbour-control/local-notices-to-mariners](http://www.phc.co.uk/leisure/harbour-control/local-notices-to-mariners)