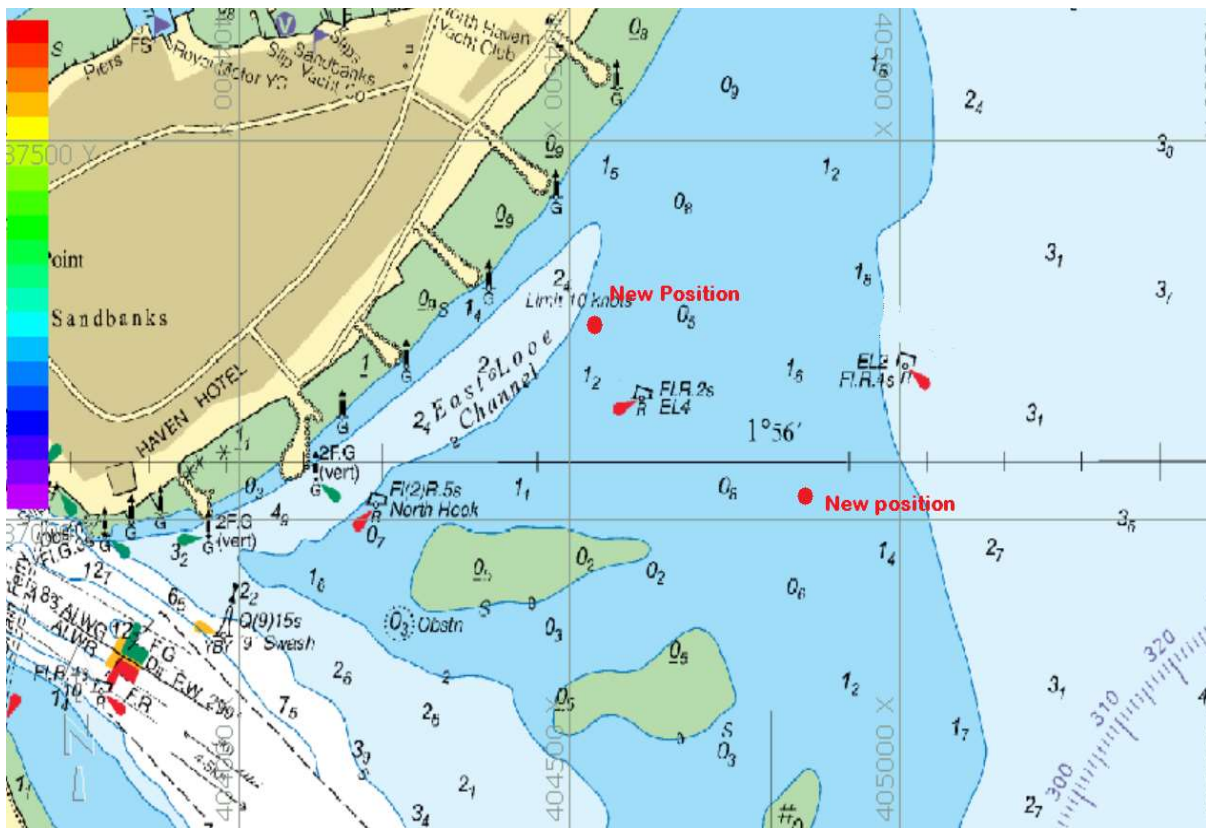


EAST LOOE CHANNEL

Mariners are advised that due to shifting sand bars it has become necessary to re-position navigation buoys EL2 and EL4 as per the chartlet below.



Mariners are reminded that Radar, AIS, CCTV, Telephone and VHF Channels are recorded 24/7

Owners, Agents, Charterers, Marinas, Yacht Clubs and Recreational Water sport Organisations should ensure that the contents of this Notice are made known to the masters or persons in charge of their vessels or craft.

CAPTAIN BRIAN MURPHY
HARBOUR MASTER

All Local Notices are available on the PHC website:

www.phc.co.uk/leisure/harbour-control/local-notices-to-mariners