

This Notice supersedes LNTM 05/2021 with updates seen on Page No3.

POOLE BAY BEACH MANAGEMENT SCHEME

MMO Licence Number L/2020/00419/1

This Local Notice to Mariners is issued on behalf of BCP Council

Notice is hereby given that work to renourish the beach at Bournemouth and Poole is scheduled to commence. Works will be carried out by appointed contractor Boskalis Westminster Ltd.

Renourishment material will be dredged from a licenced site outside of Poole Bay, and transported to Poole Bay by a Trailing Suction Hopper Dredger (TSHD), via the defined transit routes shown on the attached admiralty chart. Multiple beach sites will be renourished between Poole Beach (immediately west of Shore Road) and the Eastern end of the promenade at Southbourne with a combined total of 350,000 m³ of material. The working area of plant, with the exception of the vessel transit routes in and out of the bay, will be within the area delineated by 4 coordinates (A,B,C,D) on the attached drawing.

Vessels will be operating on a 24-hour basis and will display appropriate light and shape signals, and maintain a listening watch on VHF channel 16.

Provisionally 3 pipeline positions are required to pump material onshore to all locations via a 1300m sinker pipeline, with further pipeline on shore to deliver material along the beach to the required areas and a short floating section on the southern end for the dredger to connect. Works are expected to progress in an East to West direction and the pipeline will be relocated accordingly throughout the works. The delimited vessel transit routes and pipeline locations are appended to this Notice.

Please note that pipeline positions are provisional and may be subject to change as works require.

The work will consist of:

- Pipeline movements, both floating and sinker line

- Anchor movements
- Pumping ashore
- Survey works
- Deployment of 4 environmental monitoring buoys

Local Fisheries Liaison Officers appointed by the council will oversee vessel and equipment movements.

This notice will be further updated with details of expected movements of equipment.

Mariners are advised to remain vigilant and navigate with caution when in the vicinity of the works, and requested to give vessels, buoys and floating pipe a wide berth.

For further information please contact BCP Council at Coastal@BCPCouncil.gov.uk

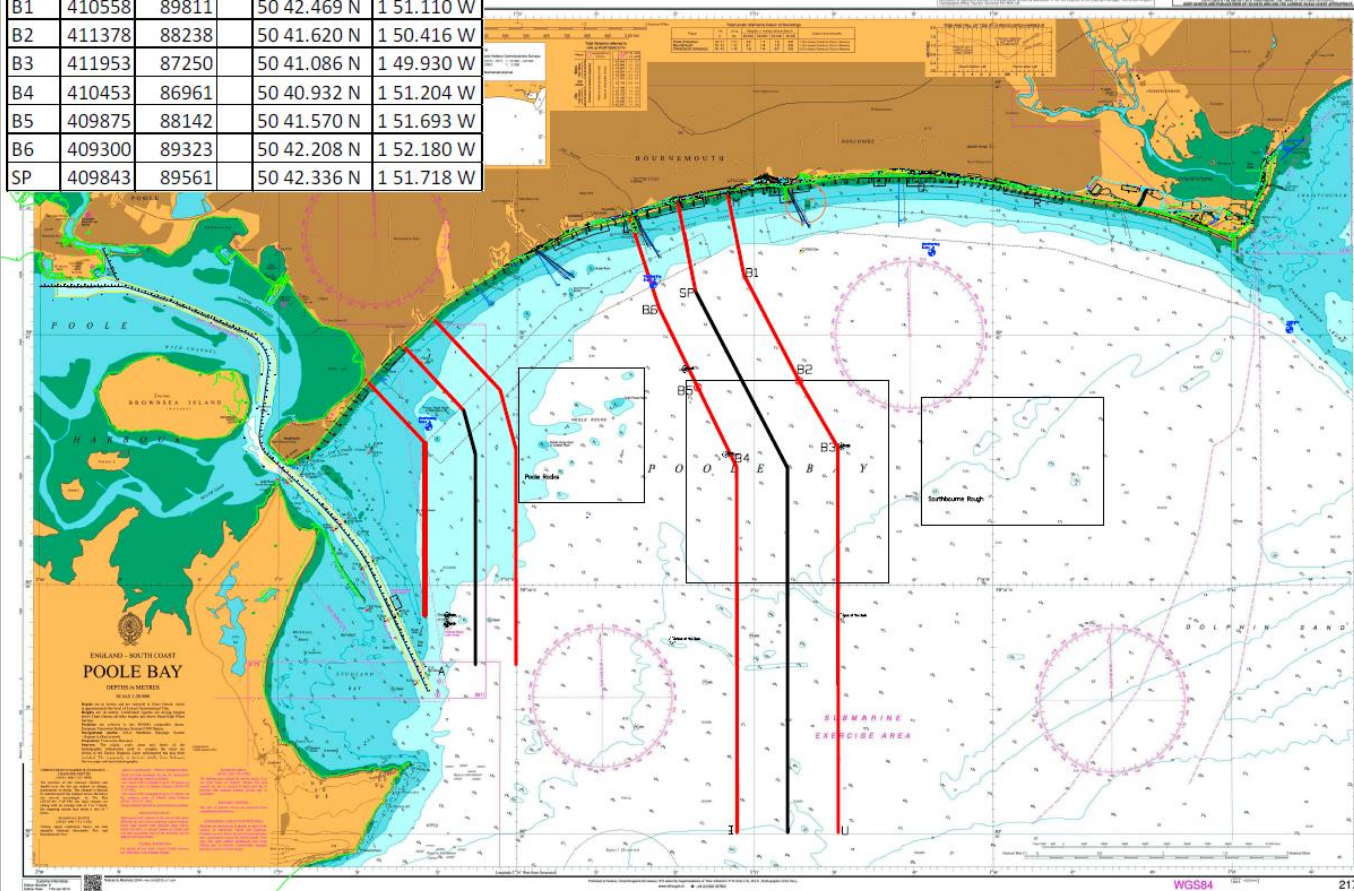
Please see next page for latest update – Update 01/03/2021

UPDATE 01/03/2021

On Tuesday 2nd March, the Ship to Shore pipeline is expected to be moving from its current location at Southbourne to its second location between Bournemouth Pier and Boscombe Pier. The 150m section of floating pipe will be disconnected from the sinker pipe and set aside. The sinker pipe will then be floated and towed to its new location via the transit corridors shown in the attached drawing (*Fig 1: Transit corridors*). Once in place, the pipe will be sunk to the seabed. The 150m floating section will be towed to the new location and reattached to the southern end of the sinker pipe. When the pipe is fully installed, the transit corridor to pipe location 1 will be no longer be used for the works.

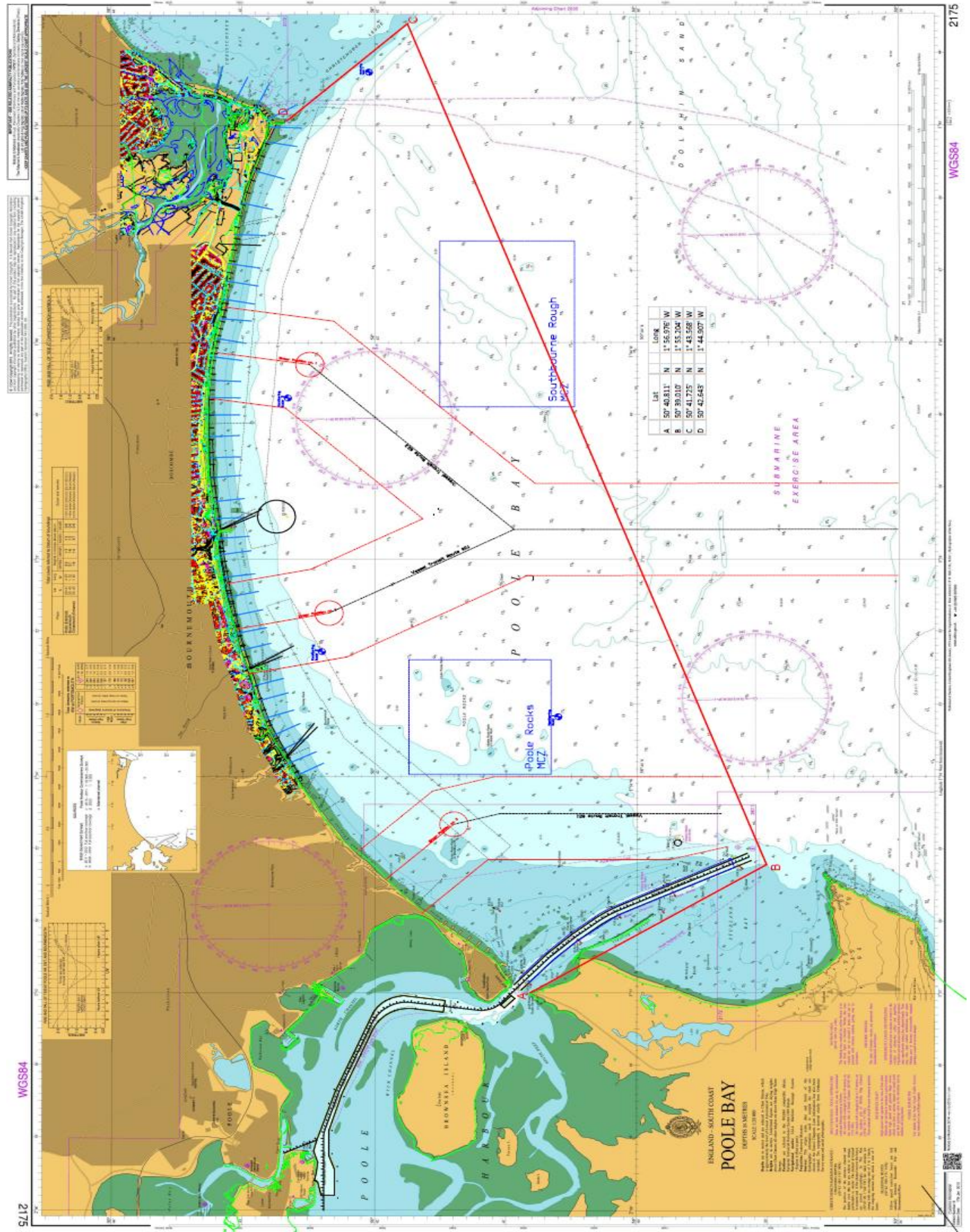
The coordinates of the southern end (and floating section) of the pipe at its second shoreline location is given in the drawing below and labelled 'SP'. It is requested that fishing equipment remain clear of this location. The floating section is marked by a fixed yellow light (F.Y.) at both ends.

	Easting	Northing	Lat	Long
B1	410558	89811	50 42.469 N	1 51.110 W
B2	411378	88238	50 41.620 N	1 50.416 W
B3	411953	87250	50 41.086 N	1 49.930 W
B4	410453	86961	50 40.932 N	1 51.204 W
B5	409875	88142	50 41.570 N	1 51.693 W
B6	409300	89323	50 42.208 N	1 52.180 W
SP	409843	89561	50 42.336 N	1 51.718 W



To assist users of the bay in identifying the vessel transit corridors on site, 6 no. marker buoys (B1 to B6) will be deployed on borders of the corridor as shown in the drawing above. The red buoys and flags with radar reflectors will be deployed following the install of the pipeline at its second location.






Fig 1: Transit corridors



HARBOUR OFFICE - 20 New Quay Road, Hamworthy, Poole, Dorset, BH15 4AF.

Telephone: (01202) 440200 **e-mail:** harbourmaster@phc.co.uk

Vessels

	
<p>TSHD Willem van Oranje</p>	<p>Multicat type workboats including but not limited to: Willendeavour, Buffalo, Severn Supporter and Viking Energy (shown above)</p>
	
	<p>Environmental monitoring buoy</p>

Mariners are reminded that radar, telephone and VHF Channels are recorded.

Owners, Agents, Charterers, Marinas, Yacht Clubs and Recreational Water sport Organisations should ensure that the contents of this Notice are made known to the masters or persons in charge of their vessels or craft.

**CAPTAIN BRIAN MURPHY
HARBOUR MASTER**

All Local Notices are available on the PHC website:
www.phc.co.uk/leisure/harbour-control/local-notice-to-mariners