

### POOLE HARBOUR SPEED LIMITS

Mariners are advised that in accordance with Poole Harbour byelaw 2(aa) speed restrictions are relaxed within the Wareham Channel, Middle Ship Channel and North Channel during the period 1st October to 31st March. *Please see page overleaf for a map highlighting the areas mentioned above.*

Mariners are reminded that byelaw 2(a) still applies which states: “every vessel shall be navigated with care and caution and at such speed and in such a manner as not to endanger the lives of or cause injury or be a nuisance to persons or endanger the safety of or cause damage to other vessels, moorings, buoys, beacons or other property.”

**The speed limits still apply throughout the rest of the harbour, especially 6 knots in the Little Channel and Holes Bay, and 10 knots in the Harbour entrance area between Bell Buoy and 1400 metres from South Haven Point.**

**Speeding and excessive wash offences are taken very seriously and may result in prosecution.**

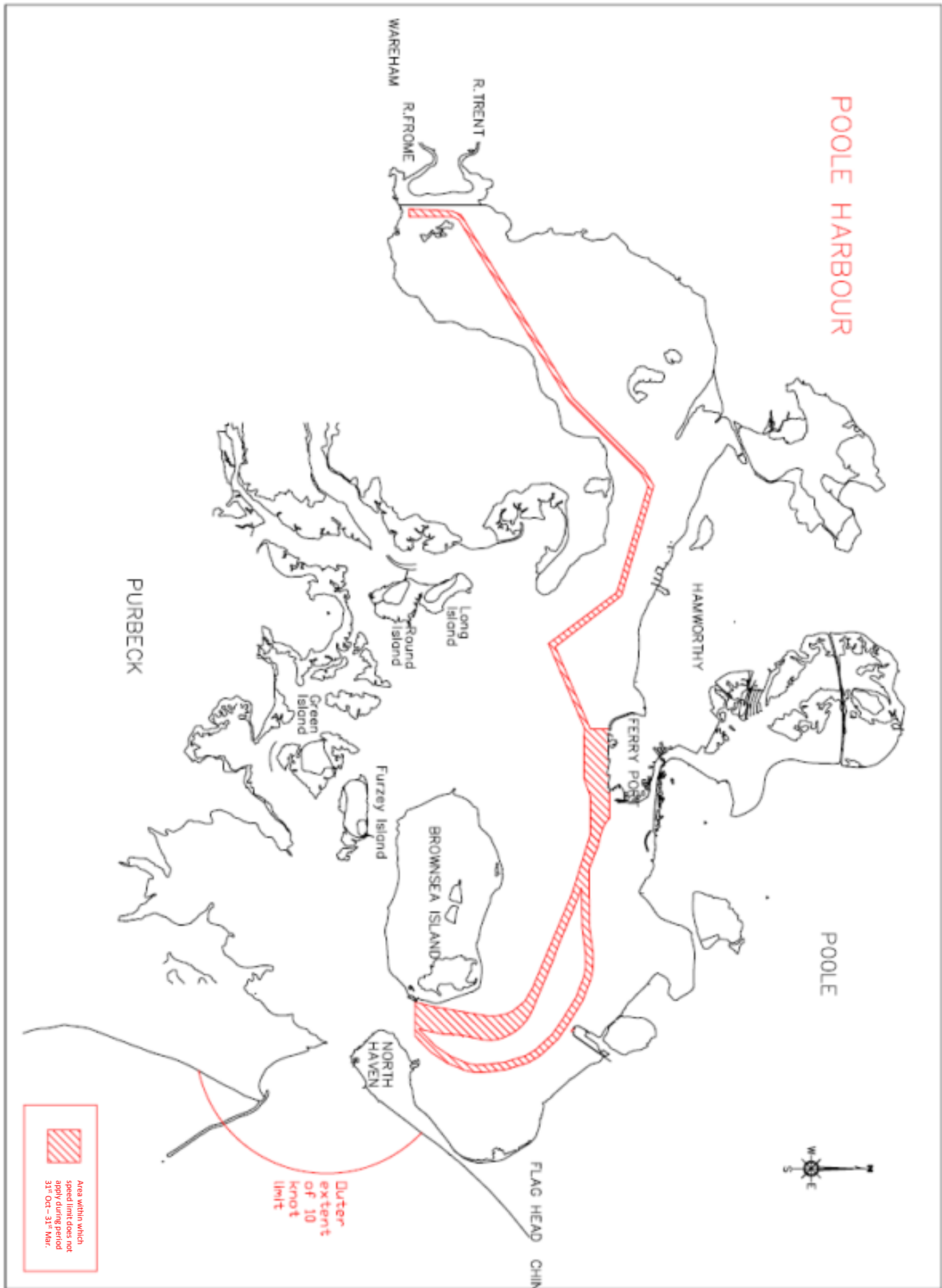
**PWC (jet bike) users are exempt from the harbour speed limits in the marked designated PWC area to the North of Brownsea Island ONLY.**

**Mariners are reminded that radar, telephone and VHF Channels are recorded.**

Owners, Agents, Charterers, Marinas, Yacht Clubs and Recreational Watersport Organisations should ensure that the contents of this Notice are made known to the masters or persons in charge of their vessels or craft.

**CAPTAIN BRIAN MURPHY  
HARBOUR MASTER**

All Local Notices are available on the PHC website:  
[www.phc.co.uk/leisure/harbour-control/local-notice-to-mariners](http://www.phc.co.uk/leisure/harbour-control/local-notice-to-mariners)



**HARBOUR OFFICE** - 20 New Quay Road, Hamworthy, Poole, Dorset, BH15 4AF.

**Telephone:** (01202) 440200 **e-mail:** harbourmaster@phc.co.uk