

POOLE HARBOUR COMMISSIONERS
LOCAL NOTICE TO MARINERS
POOLE HARBOUR

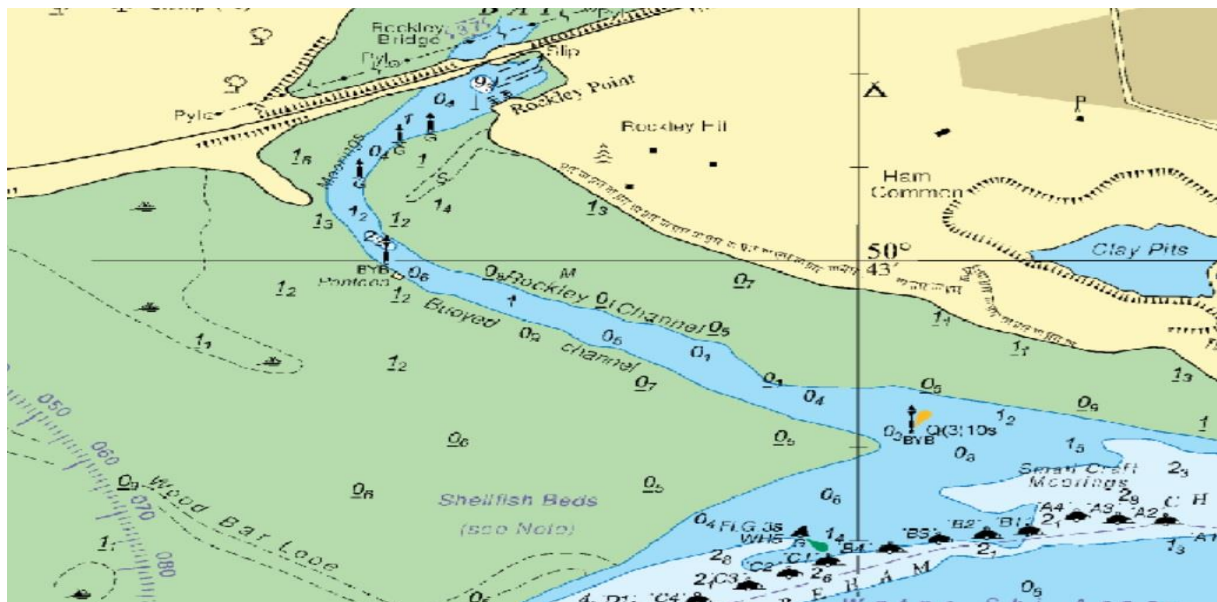
No. 8/2020

12th March 2020

Emergency Scour Works to Railway Bridge
Rockley Sands Viaduct

Mariners are advised that a number of rocks to be used as rock armour will be deployed from a barge onto the seabed, below the railway bridge deck to fill an existing scour hole causing deterioration to bridge foundations, also a concrete mattress will be installed to the eastern abutment/apron of the bridge by divers operating from a barge. Mariners are requested to keep clear of the area, and pass at slow speed with minimum wash.

All maintenance operations will take place between the 13th and 20th March, subject to suitable weather, if weather is unsuitable the operation will be extended by another seven days.



Mariners are reminded that Radar, AIS, CCTV, telephone and VHF channels are recorded

Captain B P Murphy
Harbour Master

ALL LOCAL NOTICES TO MARINERS ARE AVAILABLE ON THE PHC WEBSITE: www.phc.co.uk