



**POOLE HARBOUR COMMISSIONERS**  
**LOCAL NOTICE TO MARINERS**  
**POOLE HARBOUR**

No. 06 /2020

11<sup>th</sup> March 2020

**ARTIFICIAL REEF**

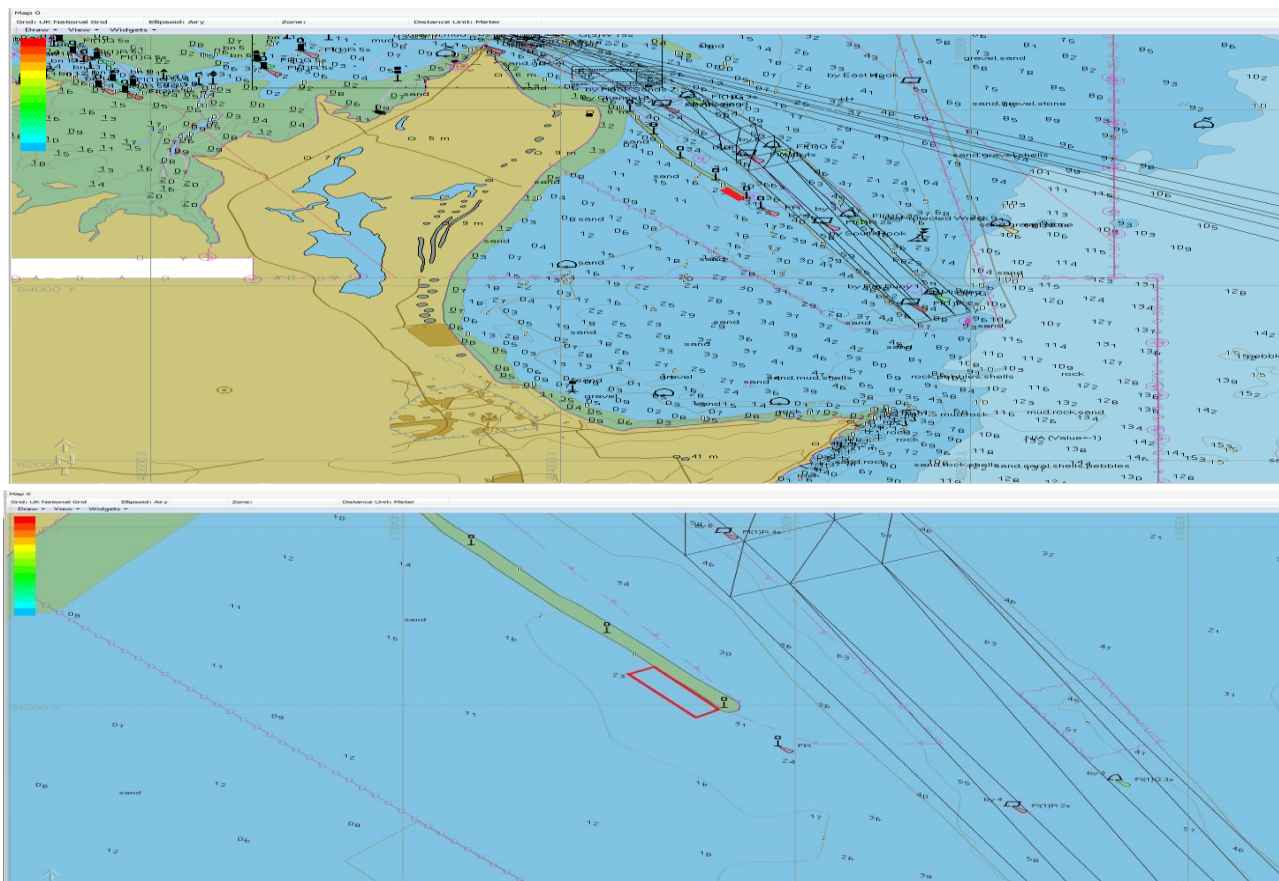
Mariners are advised that nine 1m<sup>3</sup> 3D printed concrete reef units and three 1m<sup>3</sup> concrete control blocks will be deployed from a barge onto seabed adjacent to the end of the Training Bank. The 12 reef units will be located parallel to the Training Bank at a distance of 3m away from the existing structure and each unit will have 3m separating it from the next reef unit. The 12 units will be joined together by a steel cable to minimise movement on the seabed. Mariners are requested to keep well clear.

Diving operations to lay these blocks will take place between 16<sup>th</sup> and 18<sup>th</sup> March subject to suitable weather, if weather is unsuitable they will be laid between 30<sup>th</sup> March and 1<sup>st</sup> April.

Dive support vessels will be the Avon and Rocket and will be displaying the A flag and will be keeping a listening watch on Channel 14 Mariners are also requested to keep well clear



**POOLE HARBOUR COMMISSIONERS**  
**LOCAL NOTICE TO MARINERS**  
**POOLE HARBOUR**



**Mariners are reminded that Radar, AIS, CCTV, telephone and VHF channels are recorded.**

**Captain B P Murphy**  
**Harbour Master**

ALL LOCAL NOTICES TO MARINERS ARE AVAILABLE ON THE PHC WEBSITE: [www.phc.co.uk](http://www.phc.co.uk)

HARBOUR OFFICE - 20 New Quay Road, Hamworthy, Poole, Dorset, BH15 4AF  
Telephone: (01202) 440210 Fax: (01202) 440231 e-mail:harbourmaster@phc.co.uk