

Poole Harbour is the largest natural Harbour in Europe and an environmental asset with its shallow waters, extensive mudflats, saltmarshes and reed beds. It is vital these habitats remain undisturbed; educating all Harbour users is a first step in managing these areas for the benefit of all.

Eelgrass Do's and Don'ts:

- Do be aware of where the eelgrass beds are in the Harbour.
- Do not paddle within the eelgrass beds. It is an offence to recklessly cause damage to these areas that provide shelter or protection to a variety of species.
- Don't trample the sea bed in these areas.



**Poole Harbour
Commissioners**

20 New Quay Road, Poole BH15 4AF

Harbour Office: 01202 440200

Harbour Control: 01202 440230

Paddle Boarders are solely responsible for their own safety and the safety of other Harbour users.

We have published this voluntary CODE OF CONDUCT, in conjunction with BSUPA guidelines.

PHC cannot be held liable for your actions.



www.phc.co.uk

STAND UP PADDLEBOARDING



CODE OF CONDUCT
POOLE HARBOUR



**Poole Harbour
Commissioners**

Paddleboarding in Poole Harbour

The Harbour is extremely popular with all water sports and is not without dangers to participants of these sports, to others in the vicinity and to the environment. This guide has been produced for your safety and the safety of other Harbour users.



It is highly recommended that participants are members of the BSUPA and have undergone formal training in the sport.



Wear a suitable buoyancy aid.



Wear a wetsuit all year round.



Check the weather (you ideally need light, onshore winds, under 10 knots) Do not underestimate the forces of nature.



Avoid offshore winds.



Check tidal flow is safe to SUP (under 2 knots).



Avoid all areas with fast flowing water including the Harbour Entrance.



SUP with others (tell someone where you are going and when you come back).



Avoid any hazard or fixed object in the water by a minimum of 2 board lengths.



Wear a leash (coiled on flat water or straight in surf – added safety – buy a quick release type).



Take your phone in a waterproof bag.

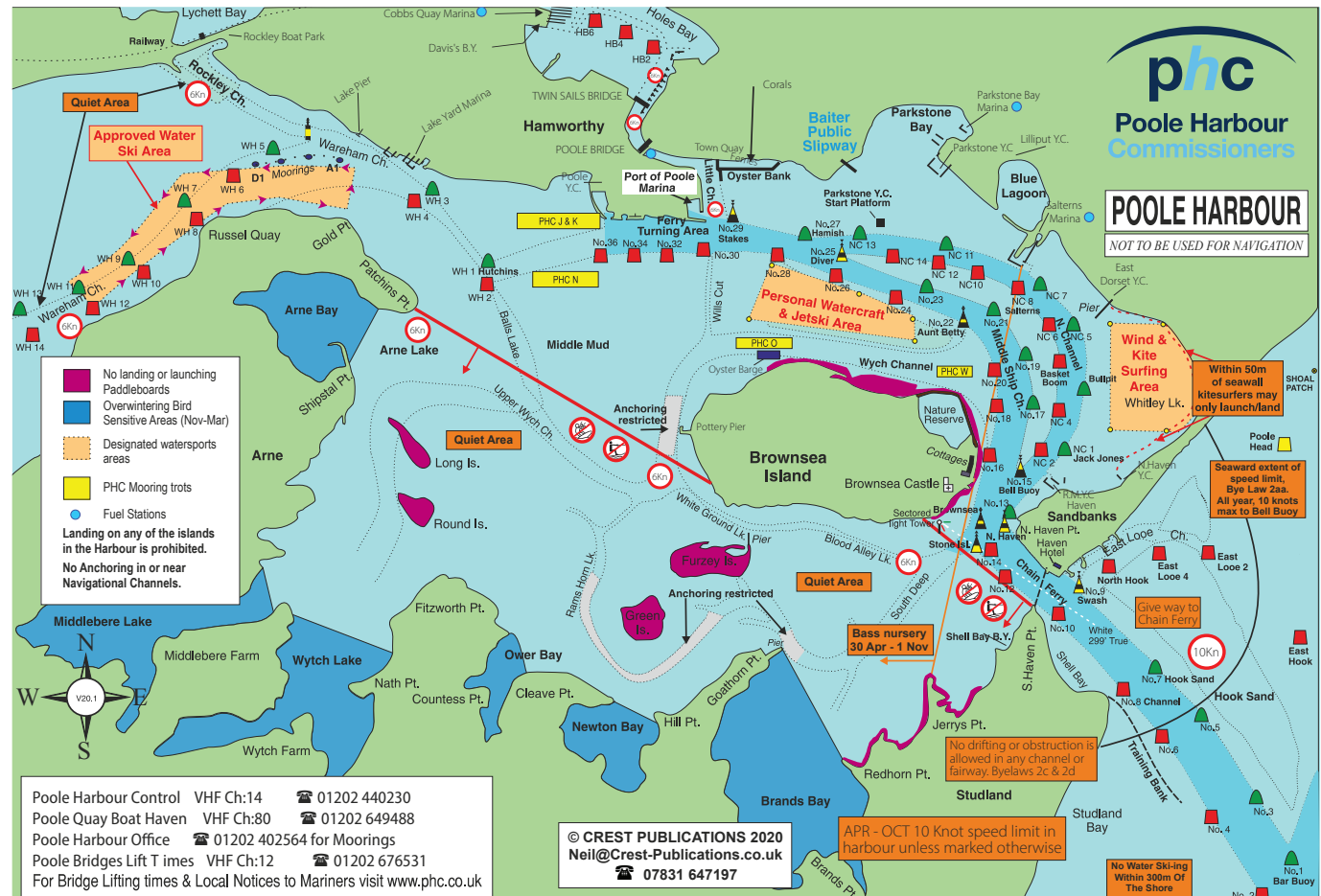


No lingering in the main channels, beware of Commercial Shipping & other craft.

Scan for
BSUPA
information



Seek advice before you go out. Plan your day and remember the water is not always safe. If conditions are poor – don't go out!



In an emergency dial 999 and ask for the coastguard

phc
Poole Harbour
Commissioners

Harbour Office: 01202 440200
Harbour Control: 01202 440230