

Poole Harbour is the largest natural Harbour in Europe and an environmental asset with its shallow waters, extensive mudflats, saltmarshes and reed beds. It is vital these habitats remain undisturbed; educating all Harbour users is a first step in managing these areas for the benefit of all.

Eelgrass Do's and Don'ts:

- Do be aware of where the eelgrass beds are in the Harbour.
- Do not surf within the eelgrass beds. It is an offence to recklessly cause damage to these areas that provide shelter or protection to a variety of species.
- Don't travel at high speeds that create significant wash in or near these areas.
- Don't trample the seabed in these areas.



Poole Harbour Commissioners

20 New Quay Road, Poole BH15 4AF

Harbour Office: 01202 440200

Harbour Control: 01202 440230

Kite Surfers are responsible for their own safety and the safety of other Harbour users.

We have published this CODE OF CONDUCT, in conjunction with BKSA guidelines, for your safety.

PHC cannot be held liable for your actions.



www.phc.co.uk

KITE SURFING



CODE OF CONDUCT POOLE HARBOUR

phc
Poole Harbour
Commissioners

Kite Surfing in Poole Harbour

Poole Harbour's 'Wind and Kite Surfing area' is situated at Whitley Lake. This is an ideal area for Sail Boarders & Kite Surfers to participate in these sports.

This Code of Conduct has been produced in conjunction with BKSAs guidelines to ensure your safety, the safety of others in the vicinity and the environment.

-  **PERMIT** Harbour Master's permission is required by permit application. All Kite Surfers require a permit to use the Harbour.
-  A minimum of 3rd party insurance is required.
-  Kite Surfers must have competence to self-rescue and full pack down in deep water.
-  No Kite Surfing within 50m of the Harbour Wall.
-  Always use an effective primary and secondary kite safety system.
-  **LEVEL 2** It is highly recommended that Kite Surfers are members of the BKSAs and have reached level 2 Independent Kite Surfer Level with a recognised school.
-  Always assist fellow Kite Surfers when launching and landing. Self-launching is not recommended.
-  Avoid Kite Surfing where there are swinging moorings.
-  Complete a Site Assessment on arrival as the area can get exceptionally busy both ashore and on the water. No matter how competent you are, or how good the conditions look – **NEVER RISK THE SAFETY OF OTHERS.**

Scan for PHC
Kite Surfing
information

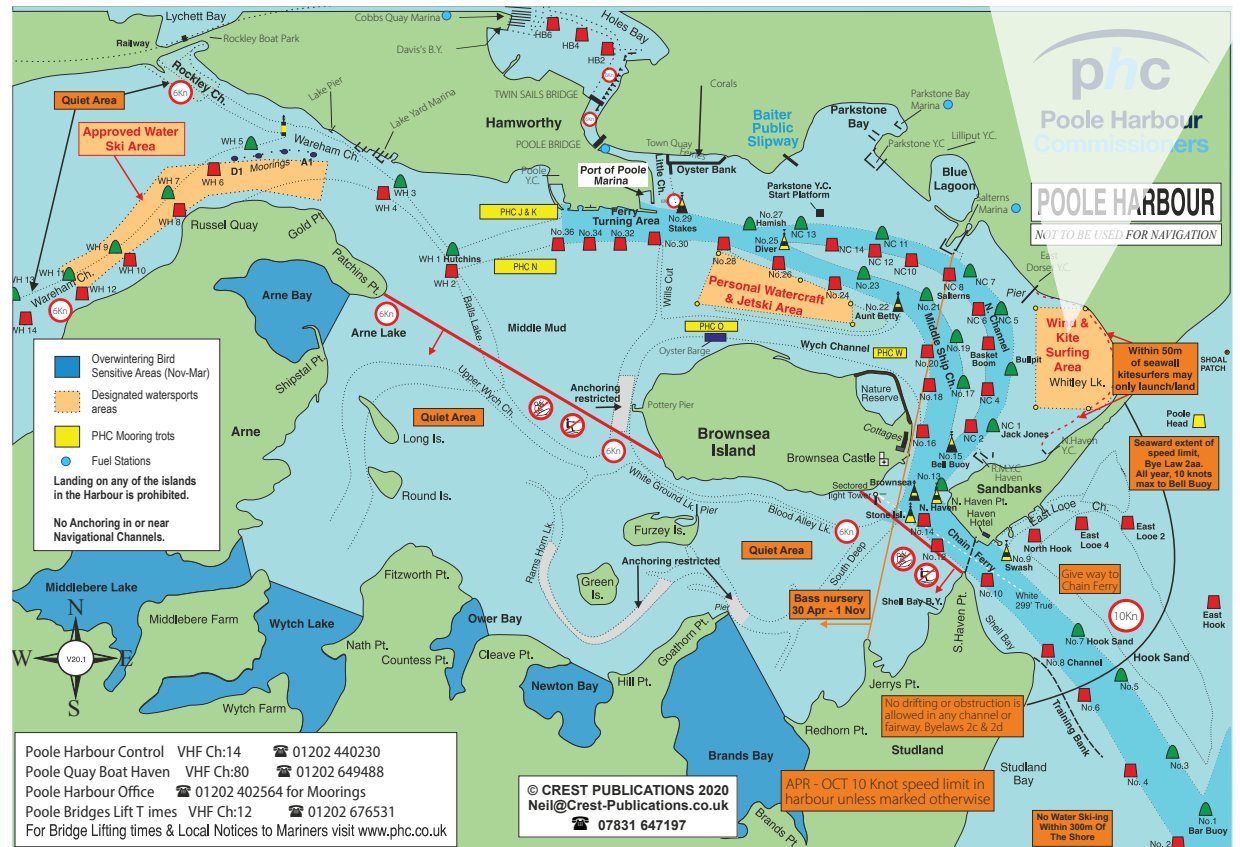
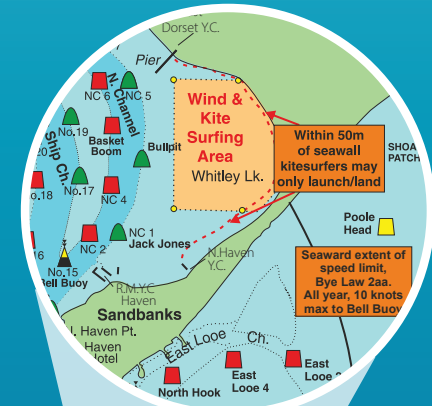


Scan for BKSAs
Kite Surfing
Information



In an emergency dial 999 and ask for the coastguard

Keep clear of
Bathers and
Moorings



phc
Poole Harbour
Commissioners

Harbour Office: 01202 440200
Harbour Control: 01202 440230