

POOLE HARBOUR COMMISSIONERS
LOCAL NOTICE TO MARINERS
POOLE HARBOUR

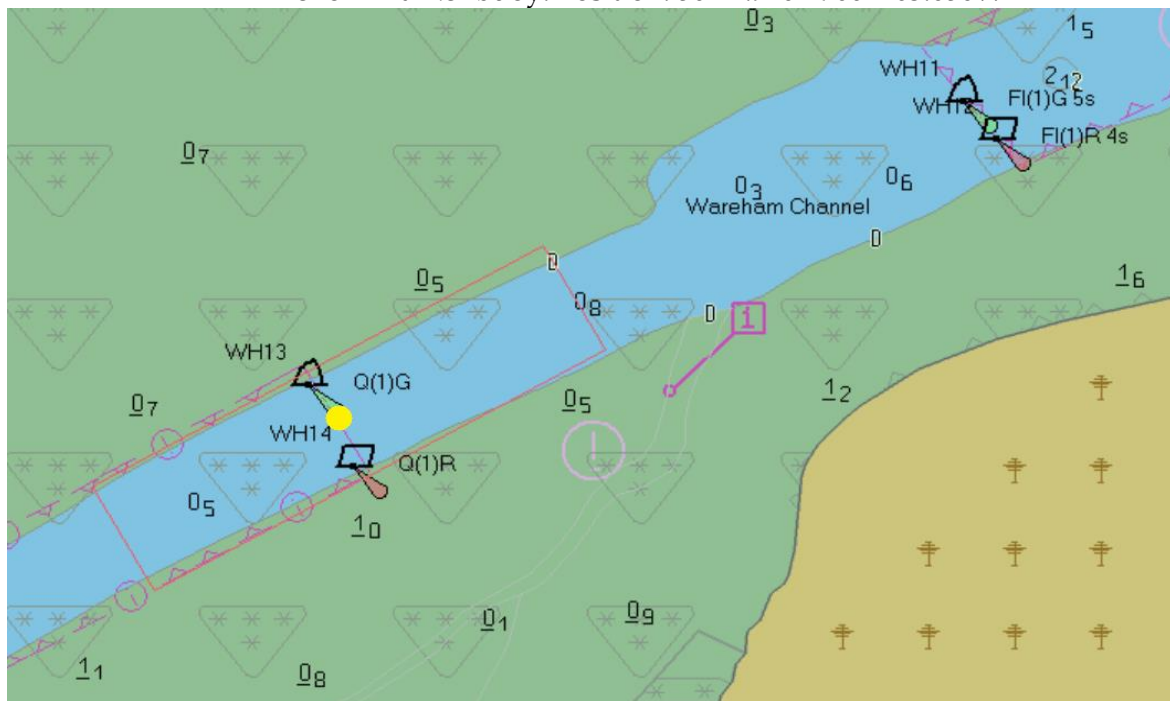
No. 02/2020

01st February 2020

OBSTRUCTION WAREHAM CHANNEL

Mariners are advised that due to reports of a suspected obstruction in the Wareham Channel a temporary marker buoy has been placed in the centre of the channel between navigation buoys WH13 and WH14. The marker buoy is a yellow conical mark and is lit with a yellow flashing light. Mariners should transit the area with caution giving the marker buoy as wide a berth as possible while remaining in the channel.

Yellow marker buoy. Position: 50°41.970 N 002° 03.656W



Mariners are reminded that Radar, AIS, CCTV, telephone and VHF Channels are all recorded.

BRIAN MURPHY
HARBOUR MASTER

ALL LOCAL NOTICES TO MARINERS ARE AVAILABLE ON THE PHC WEBSITE: www.phc.co.uk