



**POOLE HARBOUR COMMISSIONERS**  
**LOCAL NOTICE TO MARINERS**  
**POOLE HARBOUR**

No. 20/2019

8<sup>th</sup> June 2019

**MILITARY PARACHUTING**

Mariners are advised that Military Parachute Training may take place on the following date(s) and within the indicated times:

	<b>Date:</b>	<b>Local Time:</b>
	Monday 10 June	1100 - 1800
	Tuesday 11 June	1100 - 1800
	Wednesday 12 June	1100 - 1800
	Thursday 13 June	1100 - 1800

<b>Position:</b>	Lat: 50° 38.990'N	Long: 001° 56.100'W	(See Chartlet No.1)
	Lat: 50° 39.742'N	Long: 001° 52.624'W	(See Chartlet No.2)
	Lat: 50° 40.500'N	Long: 001° 54.410'W	(See Chartlet No.2)

These positions have **voluntary** exclusion / safety zones of 1000 meters radius and mariners are advised where practicable to keep clear during training times.

For the safety of both mariners and parachutists, safety boats will be operating to offer advice and information to anyone who may require it.

For more information please contact Poole Harbour Control on VHF channel 14.

This notice will self-cancel on 1<sup>st</sup> July 2019.

**Mariners are reminded that Radar, AIS, CCTV, telephone and VHF channels are recorded.**

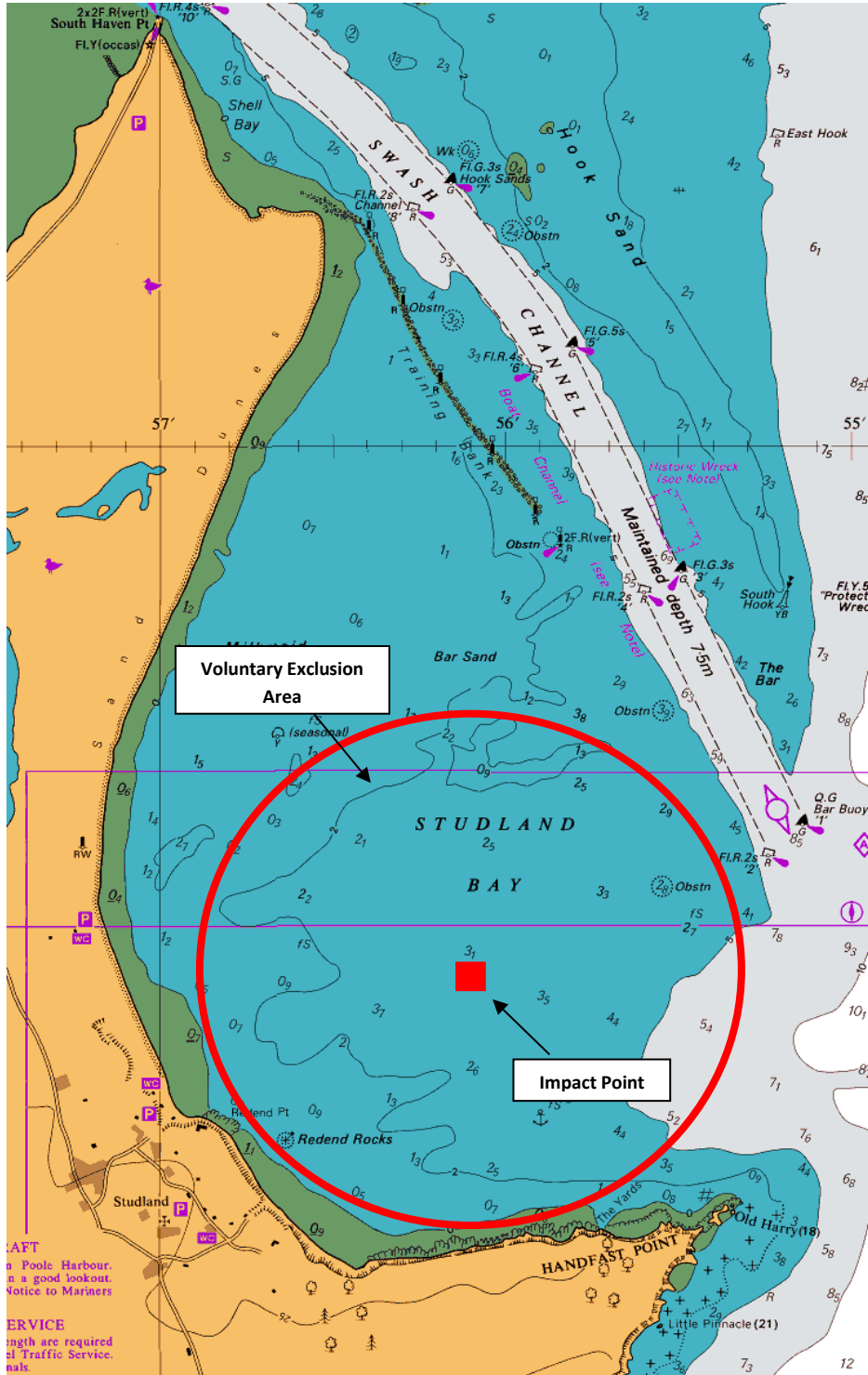
**Captain B P Murphy**  
**Harbour Master**

ALL LOCAL NOTICES TO MARINERS ARE AVAILABLE ON THE PHC WEBSITE: [www.phc.co.uk](http://www.phc.co.uk)

HARBOUR OFFICE - 20 New Quay Road, Hamworthy, Poole, Dorset, BH15 4AF  
Telephone: (01202) 440210 Fax: (01202) 440231 e-mail:harbourmaster@phc.co.uk

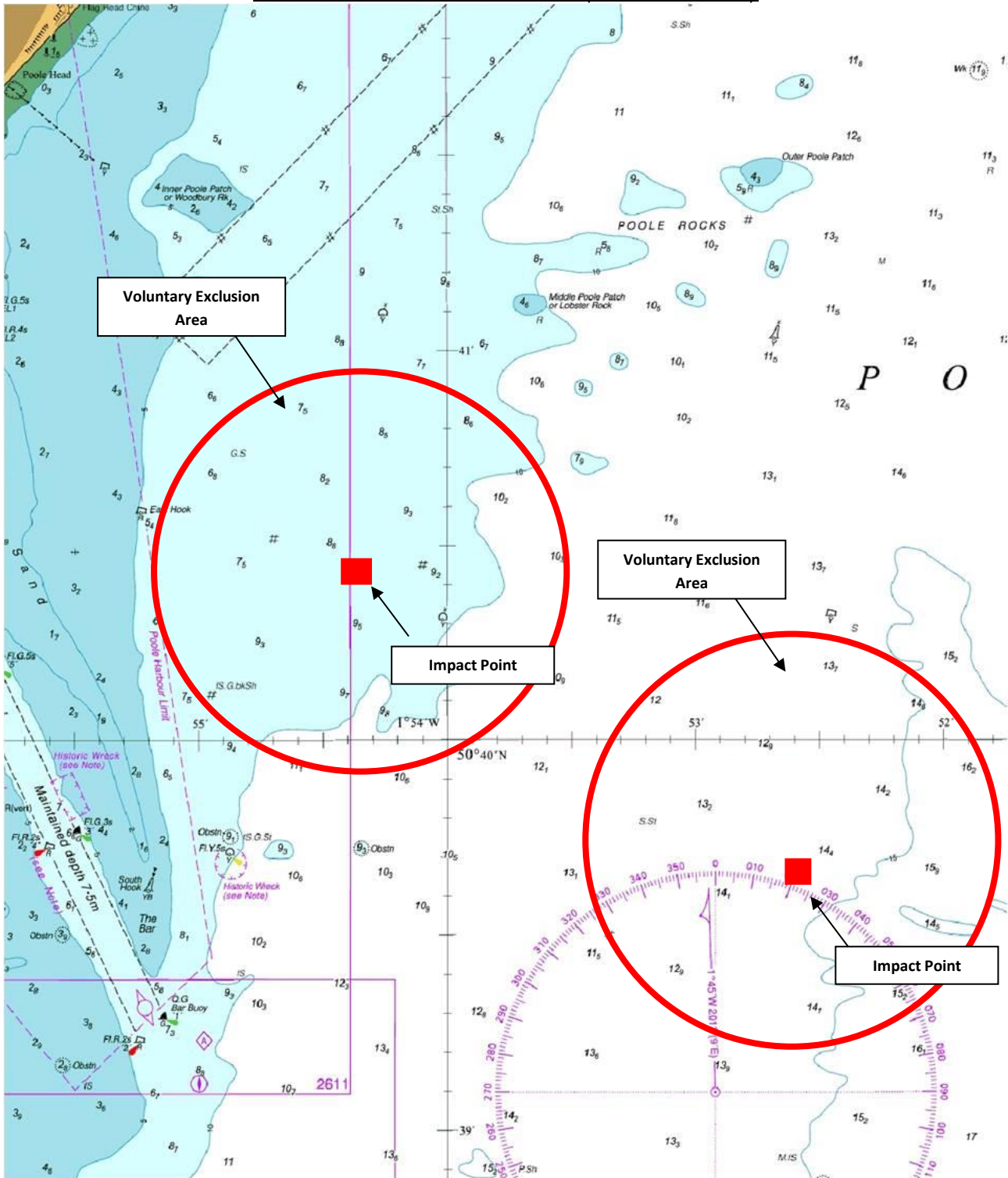
**POOLE HARBOUR COMMISSIONERS**  
**LOCAL NOTICE TO MARINERS**  
**POOLE HARBOUR**

**STUDLAND BAY DROP ZONE (Chartlet No. 1)**



**POOLE HARBOUR COMMISSIONERS**  
**LOCAL NOTICE TO MARINERS**  
**POOLE HARBOUR**

**POOLE BAY DROP ZONES (Chartlet No. 2)**



**Note: Drawings are not to scale and all positions are approximate.**