



**POOLE HARBOUR COMMISSIONERS**  
**LOCAL NOTICE TO MARINERS**  
**POOLE HARBOUR**

No. 29/2018

2<sup>nd</sup> September 2018

**MILITARY PARACHUTING**

Mariners are advised that Military Parachute Training may take place on the following date(s) and within the indicated times:

	<b>Date:</b>	<b>Local Time:</b>
	Monday 03 September	1000 - 2359
	Tuesday 04 September	1000 - 2359
	Wednesday 05 September	1000 - 2359
	Thursday 06 September	1000 - 2359
	Friday 07 September	1000 - 2359
	Monday 10 September	1000 - 2359
	Tuesday 11 September	1000 - 2359
	Wednesday 12 September	1000 - 2359
	Tuesday 25 September	1000 - 2359
	Wednesday 26 September	1000 - 2359
	Thursday 27 September	1000 - 2359
	Friday 28 September	1000 - 2359

<b>Position:</b>	Lat: 50° 38.990'N	Long: 001° 56.100'W	(See Chartlet No.1)
	Lat: 50° 39.742'N	Long: 001° 52.624'W	(See Chartlet No.2)
	Lat: 50° 40.500'N	Long: 001° 54.410'W	(See Chartlet No.2)

These positions have **voluntary** exclusion / safety zones of 1000 meters radius and mariners are advised where practicable to keep clear during training times.

For the safety of both mariners and parachutists, safety boats will be operating to offer advice and information to anyone who may require it.

For more information please contact Poole Harbour Control on VHF channel 14.

This notice will self-cancel on 1<sup>st</sup> October 2018.

**Mariners are reminded that Radar, AIS, CCTV, telephone and VHF channels are recorded.**

**Captain B P Murphy**  
**Harbour Master**

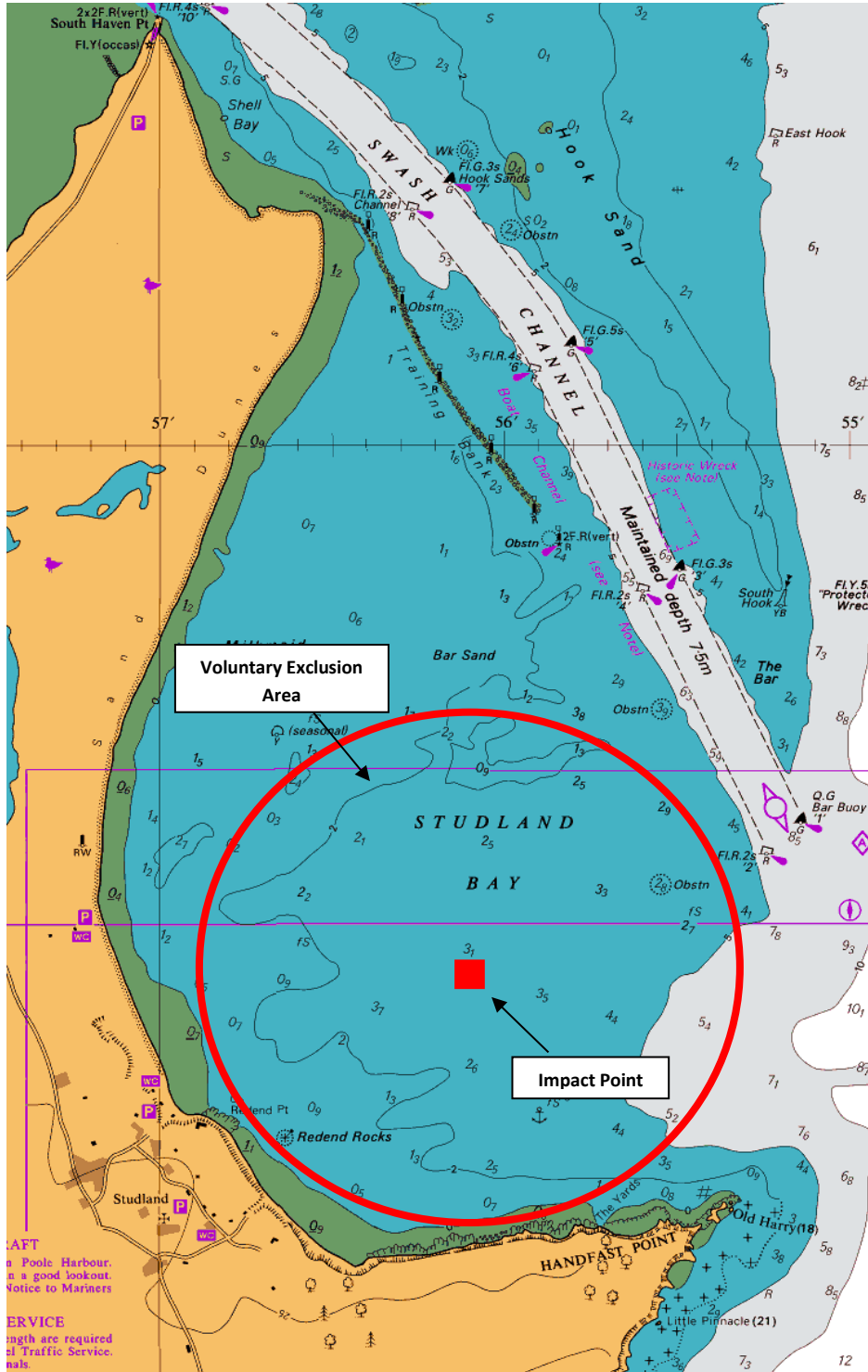
ALL LOCAL NOTICES TO MARINERS ARE AVAILABLE ON THE PHC WEBSITE: [www.phc.co.uk](http://www.phc.co.uk)

HARBOUR OFFICE - 20 New Quay Road, Hamworthy, Poole, Dorset, BH15 4AF  
Telephone: (01202) 440210 Fax: (01202) 440231 e-mail:harbourmaster@phc.co.uk



**POOLE HARBOUR COMMISSIONERS**  
**LOCAL NOTICE TO MARINERS**  
**POOLE HARBOUR**

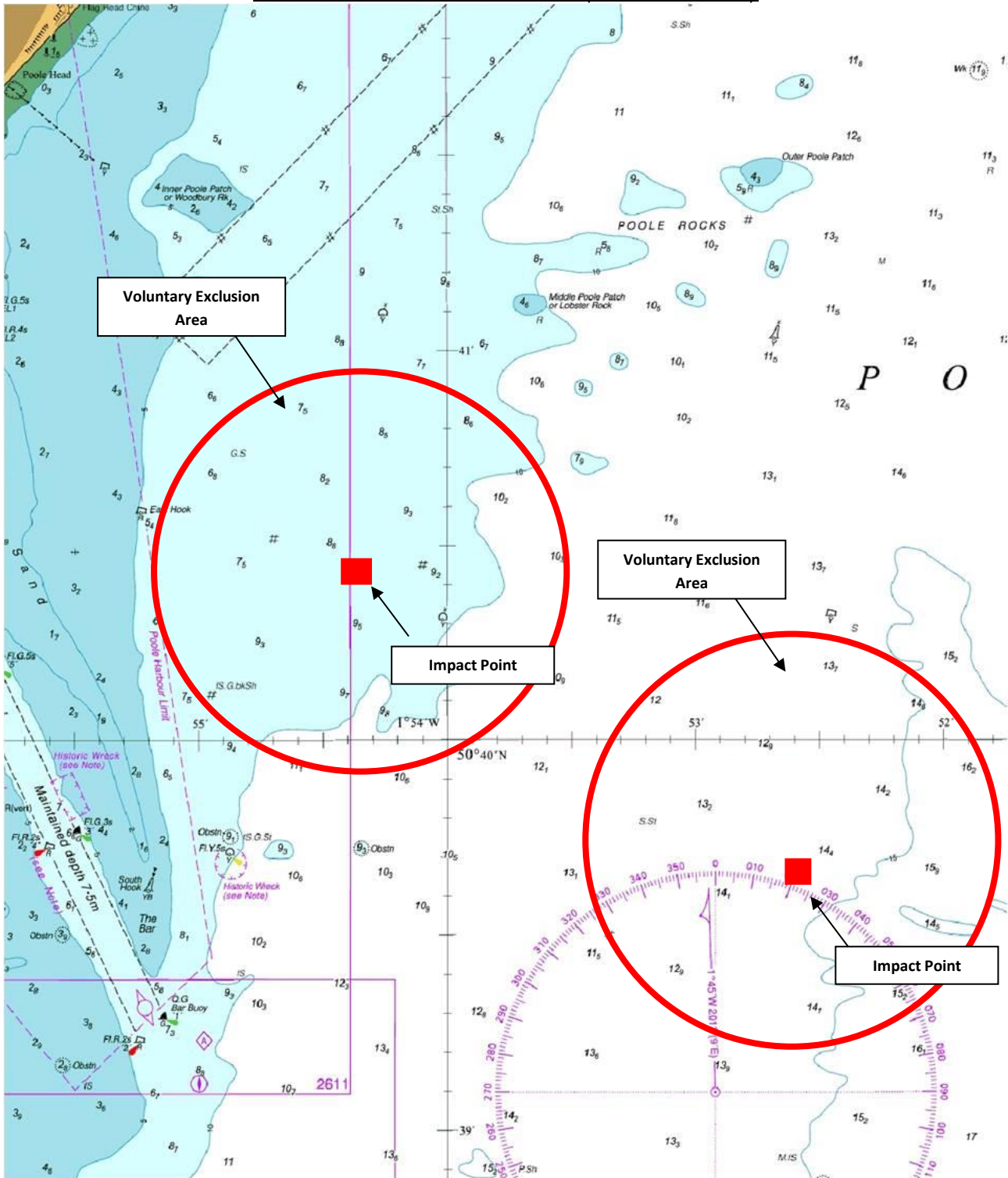
**STUDLAND BAY DROP ZONE (Chartlet No. 1)**



HARBOUR OFFICE - 20 New Quay Road, Hamworthy, Poole, Dorset, BH15 4AF  
Telephone: (01202) 440210 Fax: (01202) 440231 e-mail:harbourmaster@phc.co.uk

**POOLE HARBOUR COMMISSIONERS**  
**LOCAL NOTICE TO MARINERS**  
**POOLE HARBOUR**

**POOLE BAY DROP ZONES (Chartlet No. 2)**



Note: Drawings are not to scale and all positions are approximate.