



**POOLE HARBOUR COMMISSIONERS**  
**LOCAL NOTICE TO MARINERS**  
**POOLE HARBOUR**

No. 38/2017

11<sup>th</sup> November 2017

**Poole and Christchurch Bay Special Marks**

**This Notice supersedes LNTM 37/2017**

Mariners are advised that special marks, light characteristic FL(5).Y.20s will be placed on station as per the table and chart below during the week commencing 13<sup>th</sup> November for approximately two months.

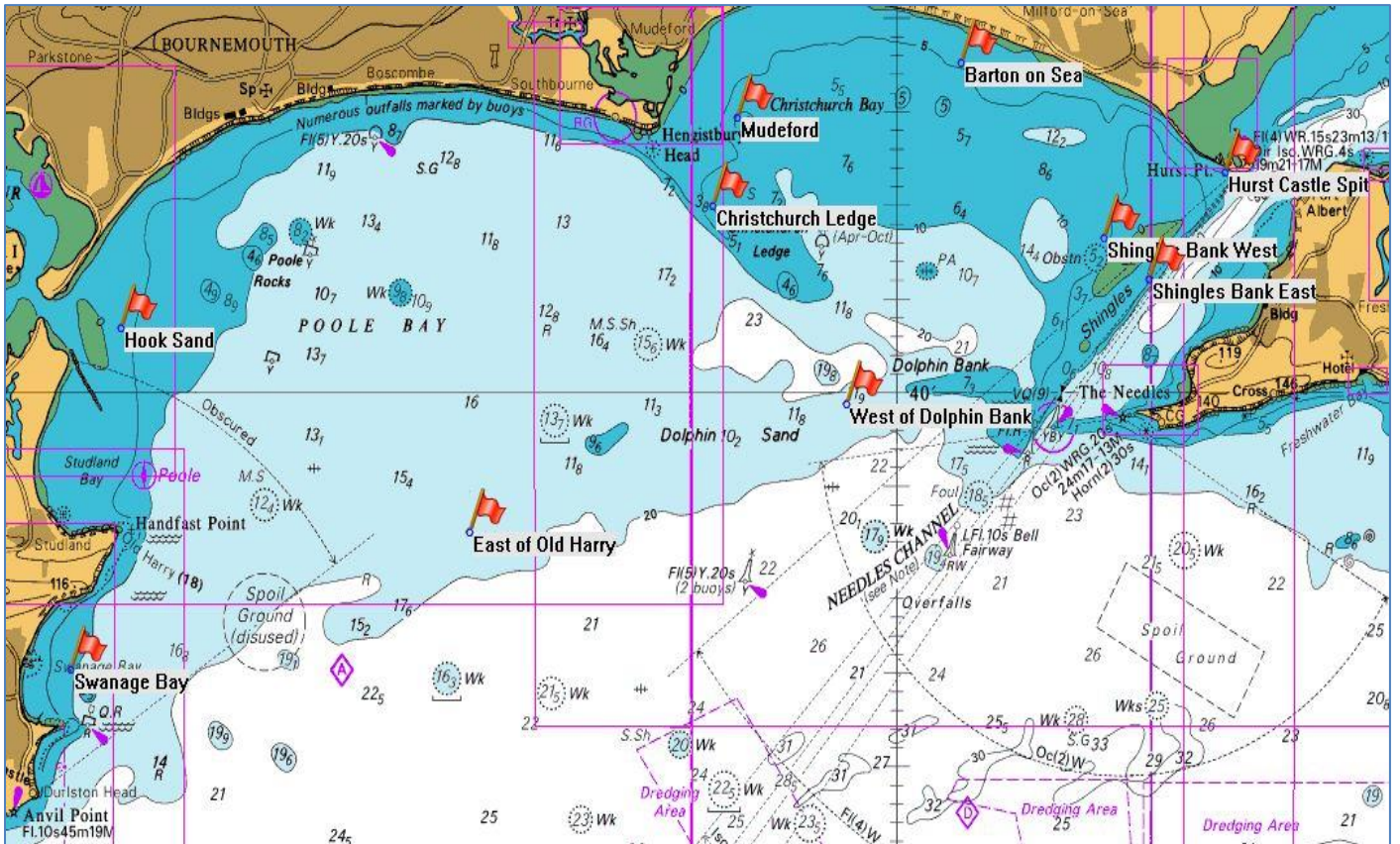
No.	Location Name	Latitude	Longitude	Approx. water depth (re: CD)
1	Swanage Bay	50° 37.031916' N	1° 56.454831' W	9
2	Hook Sand	50° 40.683124' N	1° 55.465156' W	4
3	Hurst Castle Spit	50° 42.339000' N	1° 33.457800' W	7
4	Shingles Bank East	50° 41.207589' N	1° 34.974740' W	6
Reserve	Shingles Bank West	50° 41.640000' N	1° 35.883000' W	6
5	East of Old Harry	50° 38.488866' N	1° 48.499761' W	15
6	Christchurch Ledge	50° 41.988102' N	1° 43.667584' W	8
7	Mudford	50° 42.923660' N	1° 43.188809' W	6
8	Barton on Sea	50° 43.519800' N	1° 38.718000' W	5
9	West of Dolphin Bank	50° 39.872761' N	1° 41.008986' W	12

**Table 1:** Location of deployment. Note that Shingles Bank West is a reserve site for Shingles Bank East.

These special marks are marking the locations of underwater hydrographic monitoring equipment and will be no higher than 0.6 metres off the seabed.

Mariners should navigate these areas with extreme caution.

**POOLE HARBOUR COMMISSIONERS**  
**LOCAL NOTICE TO MARINERS**  
**POOLE HARBOUR**



**Figure 1:** Illustration of deployment locations (note that the Shingles Bank West site is a reserve location in case Shingles Bank East is not licenced or is not feasible operationally)

**This notice will self-cancel on the 13<sup>th</sup> February 2018**

**Mariners are reminded that Radar, AIS, CCTV, telephone and VHF channels are recorded.**

**Captain B P Murphy**  
**Harbour Master**

ALL LOCAL NOTICES TO MARINERS ARE AVAILABLE ON THE PHC WEBSITE: [www.phc.co.uk](http://www.phc.co.uk)

**HARBOUR OFFICE - 20 New Quay Road, Hamworthy, Poole, Dorset, BH15 4AF**  
Telephone: (01202) 440210 Fax: (01202) 440231 e-mail:harbourmaster@phc.co.uk