



**POOLE HARBOUR COMMISSIONERS**  
**LOCAL NOTICE TO MARINERS**  
**POOLE HARBOUR**

No. 13/2009

13 October 2009

**Voluntary "No Anchor" Zone – Studland Bay**

**Change of Buoy Positions**

Mariners are advised that for practical reasons the buoy positions of the voluntary no anchor zone for Studland Bay are as follows:-

Positions:-

	Lat	Long
SW	50°38.61'N	01°56.34'W
SE	50°38.61'N	01°56.26'W
NE	50°38.66'N	01°56.26'W
NW	50°38.66'N	01°56.34'W

Please note additional buoy positions:-

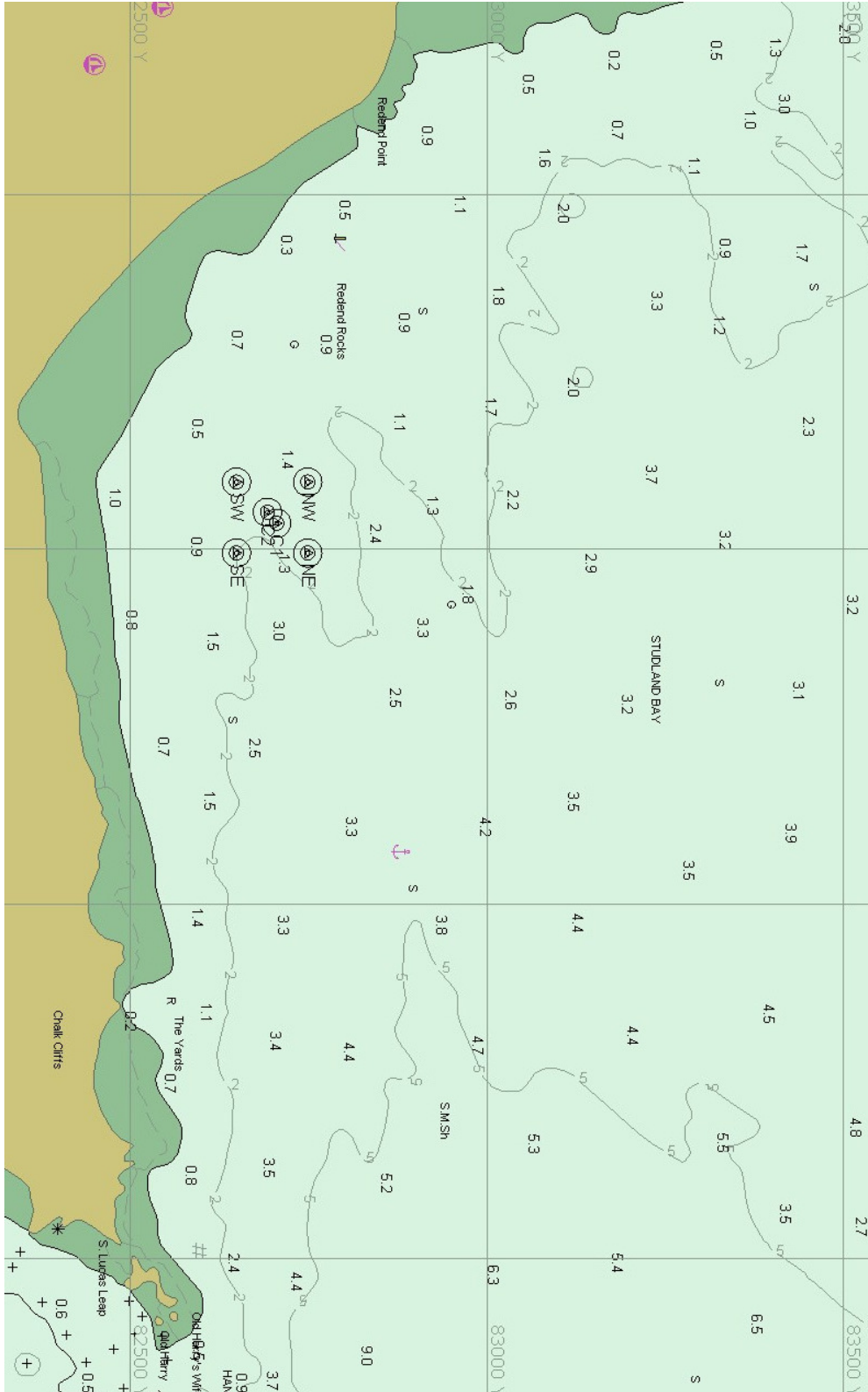
	Lat	Long
C1	50°38.64'N	01°56.29'W
C2	50°38.63'N	01°56.31'W

**Mariners are reminded that Radar, telephone and VHF Channels are recorded.**

**BRIAN MURPHY**  
**HARBOUR MASTER**



**POOLE HARBOUR COMMISSIONERS**  
**LOCAL NOTICE TO MARINERS**  
**POOLE HARBOUR**



**HARBOUR OFFICE – 20 New Quay Road, Hamworthy, Poole, Dorset, BH15 4AF**  
**Telephone: (01202) 440233 Fax: (01202) 440231 e-mail:harbourmaster@phc.co.uk**