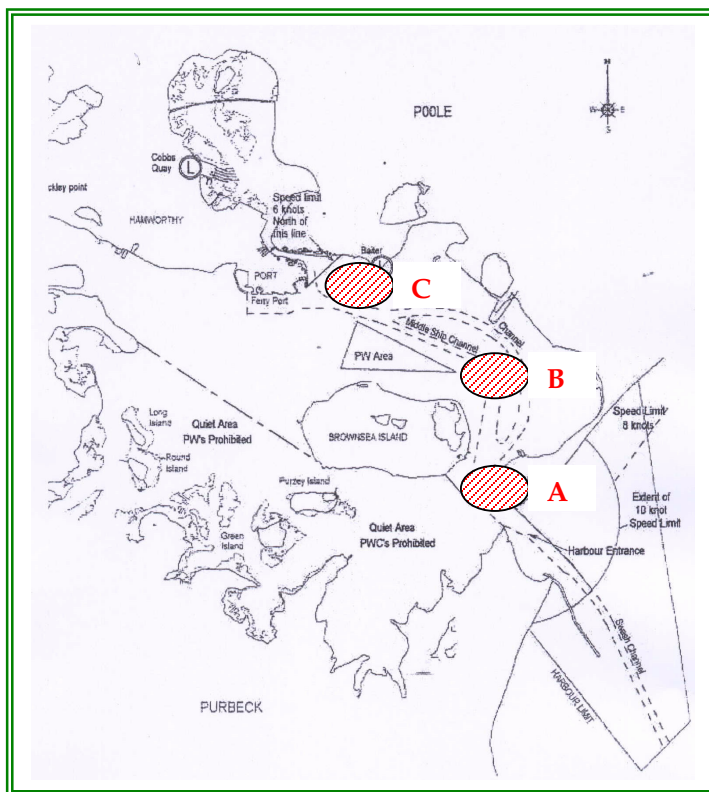




**POOLE HARBOUR COMMISSIONERS**  
**LOCAL NOTICE TO MARINERS**  
**POOLE HARBOUR**

NO: 03/2007

3 April 2007



**WATCH YOUR WASH!**

All harbour users are reminded of the 3 relevant byelaws Concerning marine safety:

- 2a Within the limits of Poole Harbour every vessel shall be navigated with care and caution and at such speed and in such manner as not to endanger the lives of or cause injury or be a nuisance to persons or endanger the safety of or cause damage to other vessels, moorings, buoys, beacons or other property.
- 2aa Without prejudice to byelaws 2(a) and 2(b) within the limits of Poole Harbour (which for the purposes of this byelaw No. 2(aa) only shall be deemed to extend at the seaward approaches to Poole Harbour to an area within or to the West of an area taken as a radius of 1400 metres from South Haven Point (position 50° 40.78' North 01 ° 56.91' West the Master of any power driven vessel or other water craft shall not, subject to the requirements of maintaining adequate steerage way and control, suffer or cause such vessel to be navigated or driven in the Harbour at a speed exceeding **10 knots** through the water.

Continued/....

2(b) Every vessel when navigating in Little Channel (from Stakes Buoy to Poole Quay), between the quays and in Holes Bay shall proceed at a speed not exceeding **six knots** through the water.

The following areas are of particular concern in the harbour where the potential risk is higher and where great care is needed so as not to endanger other craft.

**Brownsea Island Jetties and Sandbanks Jetty** (Marked A on chartlet)

Passenger boats regularly embark and disembark passengers for Brownsea Island at these jetties.

**Fuel Barge** (Marked B on chartlet)

The fuel barge which is moored south of Aunt Betty Buoy invariably has craft refuelling alongside.

**Town Quay** (Marked C on chartlet)

Passenger boats operate between The Jolly Sailor berth and Old Orchard, regularly embarking and disembarking passengers.

Craft berthed alongside in these areas are particularly vulnerable to wash, which can cause injury to personnel and damage to craft, with the subsequent potential for pollution. Coxswains of vessels underway should be careful that their wash is not causing inconvenience or danger to vessels berthed alongside. Similarly, coxswains of vessels carrying out embarkation/disembarkation of passengers within these areas must be aware of their vulnerability and take appropriate precautions.

Harbour Control and patrol staff will be monitoring this situation carefully over the summer season with the aim of reducing the number of incidents. Prosecution action will be taken where appropriate.

**This Notice supersedes Local Notice to Mariners 08/2005**

**CCTV is in operation in Poole Harbour. Recorded videotapes may be used in evidence to prosecute byelaw offenders.**

**PETER BOOTH**  
**HARBOUR MASTER**