



POOLE HARBOUR COMMISSIONERS
LOCAL NOTICE TO MARINERS
POOLE HARBOUR

No. 13/2017

4th May 2017

MILITARY PARACHUTING

Mariners are advised that Military Parachute Training may take place at the following date and times:

Date:	Time:
Monday 08 May	1000-1900
Tuesday 09 May	1000-1900
Wednesday 10 May	1000-1900
Thursday 11 May	1000-1900
Friday 12 May	1000-1900
Tuesday 16 May	1000-1900
Wednesday 17 May	1000-1900
Thursday 18 May	1000-1900
Friday 19 May	1000-1900
Tuesday 23 May	1330-2300
Wednesday 24 May	1330-2300
Thursday 25 May	1330-2300
Tuesday 30 May	1330-2300
Wednesday 31 May	1330-2300

Position:	Lat: 50° 38.990'N	Long: 001° 56.100'W	(See Chartlet No.1)
	Lat: 50° 39.742'N	Long: 001° 52.624'W	(See Chartlet No.2)
	Lat: 50° 40.500'N	Long: 001° 54.410'W	(See Chartlet No.2)

These positions have **voluntary** exclusion / safety zones of 1000 yard radius and mariners are advised where practicable to keep clear during training times.

For the safety of both mariners and parachutist, safety boats will be operating to offer advice and information to anyone who may require it.

For more information please contact Poole Harbour Control on VHF channel 14.

This notice will self-cancel on 1st June 2017.

Mariners are reminded that Radar, AIS, CCTV, telephone and VHF channels are recorded.

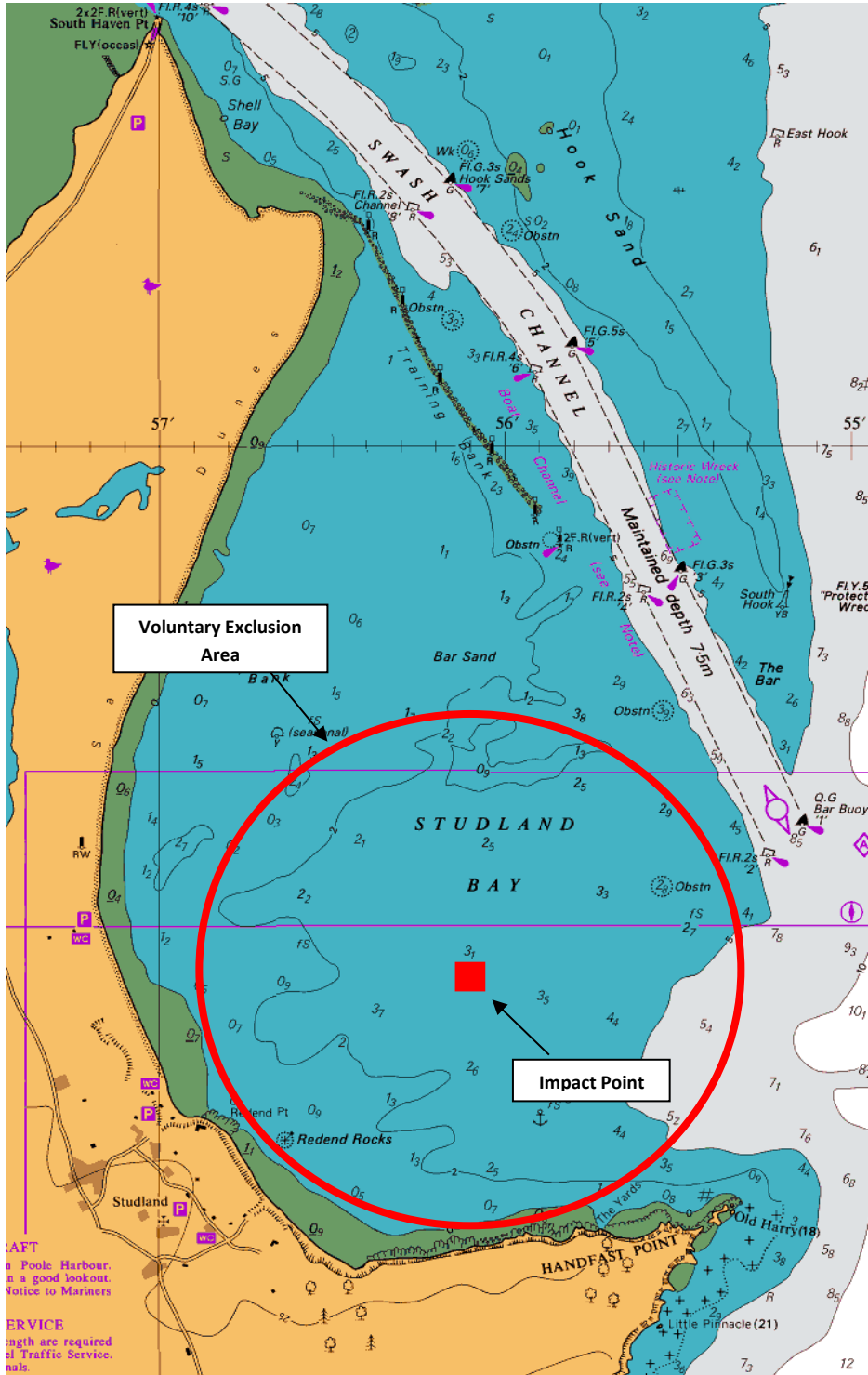
Captain B P Murphy
Harbour Master

ALL LOCAL NOTICES TO MARINERS ARE AVAILABLE ON THE PHC WEBSITE: www.phc.co.uk

HARBOUR OFFICE - 20 New Quay Road, Hamworthy, Poole, Dorset, BH15 4AF
Telephone: (01202) 440210 Fax: (01202) 440231 e-mail:harbourmaster@phc.co.uk

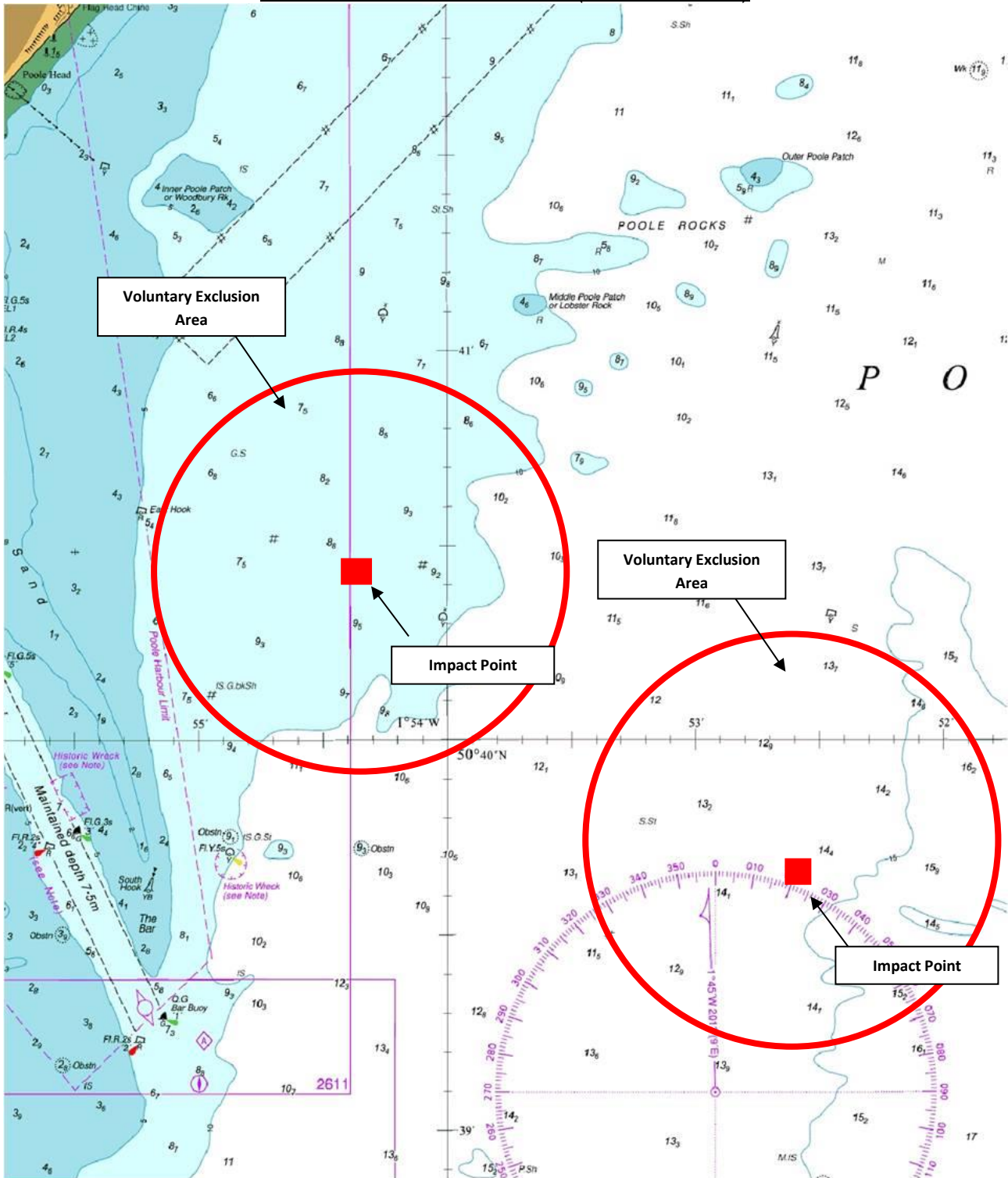
POOLE HARBOUR COMMISSIONERS
LOCAL NOTICE TO MARINERS
POOLE HARBOUR

STUDLAND BAY DROP ZONE (Chartlet No. 1)



POOLE HARBOUR COMMISSIONERS
LOCAL NOTICE TO MARINERS
POOLE HARBOUR

POOLE BAY DROP ZONE (Chartlet No. 2)



Note: Drawings are not to scale and all positions are approximate.